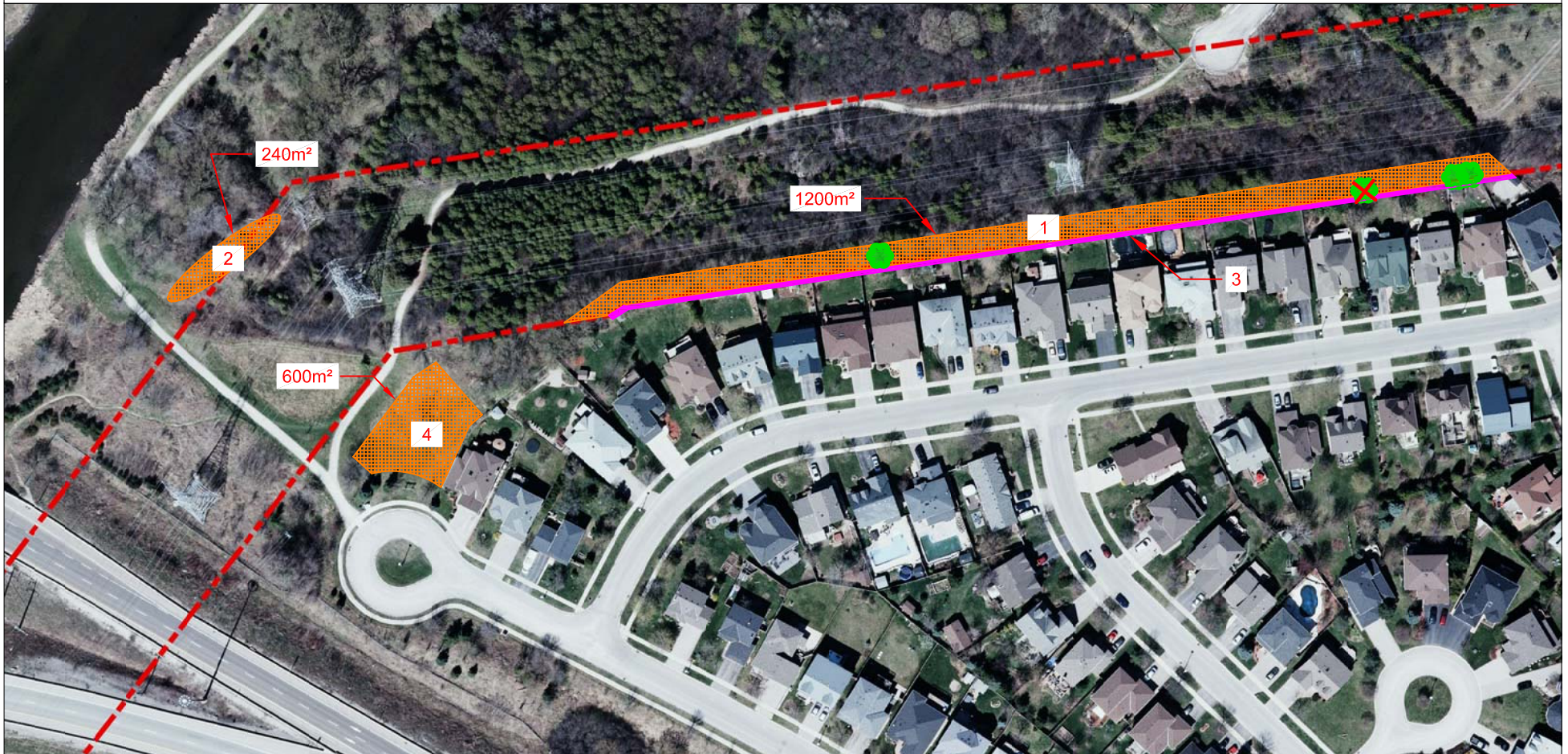





Silvercreek Park Hydro Corridor Landscape Plan



Legend:

-  Planting Area
-  Tree
-  Limits of Hydro vegetation management

PLANT LIST

Area 1			
Count	Size	Botanical Name	Common Name
30	1 gallon	<i>Rhus aromatica</i>	Fragrant Sumac
30	1 gallon	<i>Aronia melanocarpa</i>	Black Chokecherry
Area 2			
10	1 gallon	<i>Cephalanthus occidentalis</i>	Buttonbush
10	1 gallon	<i>Salix candida</i>	Sage-leaved Willow
10	10 gallon	<i>Cornus racemosa</i>	Gray Dogwood

Notes:

Area 1:
Two oak trees behind 19 Pacific Place to be trimmed to line requirements, 1 multi-stemmed oak behind 23 Pacific Place to be removed due to rot. Sugar maple behind 43 Pacific Place to be substantially trimmed, potentially removed (to be re-assessed during work). Potential for some Manitoba maples to be retained at fence line depending on condition and structure of trees.

Area 2:
Compatible species permitted in corridor; restricted to bottom of bank. Moist to wet conditions.

Area 3:
Potential tree screen option on private property through beautification funds to be coordinated through third party. Non-compatible (> 2m) tree species may be considered.

Area 4:
Registered Hydro Guelph right-of-way easement, restricts planting of any vegetation; further investigation required

