



**Grand River Conservation Authority
Agenda - General Meeting**

PUBLIC

Friday, October 25, 2019

9:30 a.m.

Auditorium

Grand River Conservation Authority
400 Clyde Road, Box 729
Cambridge, ON N1R 5W6

Pages

1. **Call to Order**
2. **Certification of Quorum – 13 Members constitute a quorum (1/2 of Members appointed by participating Municipalities)**
3. **Chair's Remarks**
4. **Review of Agenda**

THAT the agenda for the General Membership Meeting be approved as circulated.
5. **Declarations of Pecuniary Interest**
6. **Minutes of the Previous Meetings**

THAT the minutes of the General Membership Meeting of September 27, 2019 be approved as circulated.
7. **Business Arising from Previous Minutes**
8. **Hearing of Delegations**
 - a. **Stephanie De Grandis - Proposed Amendments to the Aggregate Resources Act**
 - b. **Don McLean - Kirkwall-Hamilton Pipeline Project**
9. **Presentations**
10. **Correspondence**

11. 1st and 2nd Reading of By-Laws

12. Reports:

- a. GM-10-19-103 - Proposed Amendments to the Aggregate Resources Act 12
THAT Report GM-10-19-103 Proposed Amendments to the Aggregate Resources Act be received as information;
AND THAT this report be forwarded to the Ministry of Natural Resources and Forestry through Environmental Registry Number 019-0556.
- b. GM-10-19-101 - 2020 Budget Update - General Municipal Levy Apportionment 15
THAT Report GM-10-18-107 - 2019 Budget Update – General Municipal Levy Apportionment be received as information.
- c. GM-10-19-99 - Cash and Investment Status 18
THAT Report Number GM-10-19-99 Cash and Investment Status – September 2019 be received as information.
- d. GM-10-19-104 - Financial Summary 20
THAT the Financial Summary for the period ending September 30, 2019 be approved.
- e. GM-10-19-100 - 2020 Board Meeting Schedule 25
THAT the Meeting Schedule for 2020 Grand River Conservation Authority General Membership meetings be approved.
- f. GM-10-19-102 - Current Watershed Conditions 28
That Report Number GM-10-19-102 – Current Watershed Conditions as of October 16, 2019 be received as information.

13. Committee of the Whole

14. General Business

15. 3rd Reading of By-Laws

16. Other Business

17. Closed Meeting (if required)

THAT the General Membership enter a closed meeting to discuss a confidential matter.

- a. Minutes of the Previous Closed Session

18. Next Meeting

General Membership - November 22, 2019 at 9:30 a.m.

Audit Committee - November 22, 2019 following the General Membership

19. Adjourn

20. Grand River Source Protection Authority Meeting

Regrets only to:

Office of the Chief Administrative Officer, Phone: 519-621-2763 ext. 2200

New Hamilton pipeline will bulldoze sensitive lands

North America's biggest pipeline company is planning a new 48-inch fracked gas pipeline across rural Flamborough. It would plough through large properties purchased by the Hamilton Conservation Authority for the purpose of protecting these environmentally sensitive lands. The pipe from Kirkwall to past Highway 6 would cross both Spencer Creek and Bronte Creek.

The area is dominated by the Beverly Swamp, one of the largest and most environmentally significant wetlands in Ontario, and the headwaters for several major streams. Pipeline construction usually means bulldozing everything within a 30 metre wide corridor – that would continue for about 10 kilometres in this case.

Climate emergency ignored

The proposal flies in the face of the climate emergency that requires rapid reductions in the use of fossil fuels such as gas, oil and coal. A recent study commissioned by the cities of Hamilton and Burlington says natural gas usage must fall by over 80 percent in the next twenty years as all buildings are retrofitted.

Instead the new pipe assumes major increases in gas usage that would persist for the pipeline's multi-decades lifetime. It would carry fracked gas from Pennsylvania – the current major source of Ontario's natural gas supply. Because the fracking process features extensive leakage, fracked gas likely causes even more climate damage than coal. It also

permanently contaminates groundwater, pollutes the surface waters used in the extraction and frequently results in earthquakes.

Pipeline across the Greenbelt

The proposed pipeline route lies entirely within the protected Greenbelt and through lands laced with city-designated environmentally significant areas, many of them wetlands. It is a further assault on Indigenous peoples and on the treaties that promised good care of our shared lands and waters. Since this pipe starts and ends in rural Flamborough where there is no gas extraction, it appears to be part of a much larger project that Enbridge has not yet announced.

Running out of time

Humanity is confronted by a rapidly growing number of climatic catastrophes caused or aggravated by the burning of gas, oil and coal. The global scientific community warned a year ago that the emissions from this burning must be cut in half before 2030 – a task they acknowledged as extremely difficult but technically possible. That task cannot be accomplished if the fossil fuel industry, including its pipeline companies, continues to expand its infrastructure and carries on business as though the health and safety of the planet doesn't matter.

The Hamilton 350 Committee calls on everyone to oppose this new fracked gas pipeline across rural Hamilton. We urge the city, affected Conservation Authorities, and the Ontario Energy Board to deny permits and refuse to allow this massive climate-threatening construction project to scar environmentally sensitive lands and waters.

Get in touch with us to help: info@hamilton350.org

Enbridge fracked-gas pipe crosses major streams and Beverly Swamp

Hamilton 350 Committee
for Action on Climate Change

Grand River Conservation Authority

Report Number: GM-10-19-103
Date: October 25, 2019
To: Members of the Grand River Conservation Authority
Subject: Proposed Amendments to the Aggregate Resources Act (ERO 019-0556)

Recommendation:

THAT Report GM-10-19-103 Proposed Amendments to the Aggregate Resources Act be received as information;

AND THAT this report be forwarded to the Ministry of Natural Resources and Forestry through Environmental Registry Number 019-0556.

Report:

On September 20, 2019, the Ministry of Natural Resources and Forestry (MNRF) released a proposal on the Environmental Registry (ERO 019-0556) recommending changes to the provincial aggregate resources framework. The Province has indicated the changes are aimed at reducing burdens on business, while encouraging environmental protection and public engagement. The proposal is in response to the feedback provided at the Aggregate Summit hosted by MNRF in March of this year, as well as an online survey posted to their website. The public comment period for the proposal is open until November 4, 2019.

Many of the proposed changes align with the amendments previously made under Bill 139 – the Aggregate Resources and Mining Modernization Act (2016), but have yet to be placed into regulation. The current proposal does not provide any actual changes to the Aggregate Resources Act (ARA) or associated Regulations, but rather a “Summary of Proposed Changes”. As a result, it is challenging to assess the potential effect the proposal may have on water and natural resources within the watershed.

There are some new changes in this proposal related to below water table aggregate applications as well as consultation requirements that we request the Province consider in their review of the ARA and associated regulations.

Proposed Amendments to the ARA

1. *Strengthen protection of water resources by creating a more robust application process for existing operators that want to expand to extract aggregates within the water table, allowing for increased public engagement on applications that may impact water resources.*

- Existing applications that seek to expand to below the water table should be include all of the review and public consultation that is required for new applications. The current application process to amend an existing license to go below the water table does not require MNRF to circulate the application or provide public notice to external stakeholders. GRCA supports a more ‘robust’ application process if it includes mandatory circulation of applications to go below

the water table to municipalities and agencies such as conservation authorities, a requirement for public consultation, and the inclusion of an appeal process for these stakeholders. In addition to applications that may impact water resources (as noted in the proposal), a modified application process should also include applications that may impact natural environment resources both on and off of the extraction site.

- Cumulative effects assessments should be conducted in areas where there are a concentration of existing licences or new applications for licences to go below the water table. At a minimum, detailed hydrogeological assessments prepared by qualified professionals should be conducted for any existing licence that applies for an amendment of a licence to go below the water table. This would help to demonstrate that there will be no offsite or onsite impacts to the quantity and quality of local water resources that sustain natural environment features and address municipal interests in the protection of local municipal drinking water sources. These studies should also prescribe detailed pre and post extraction water and natural environment monitoring requirements for these areas. Depending on site characteristics, other studies should also be required for below water table extraction such as Environmental Impact Studies and other evaluations.

2. Clarify that depth of extraction for pits and quarries is managed under the Aggregate Resources Act and that duplicative municipal zoning by-laws relating to the depth of aggregate extraction would not apply

- Some municipalities have policies and zoning (i.e. vertical zoning) in place to ensure that local and subwatershed level impacts of below water table applications are fully evaluated. Since it is unclear if the above noted proposal to require a more robust approval process for existing licenses will result in an equivalent or improved opportunity for municipalities and other agencies such as conservation authorities to evaluate the proposal, the use of zoning by-laws and their associated public process should not be included in amendments to the ARA until additional information on the proposed application process is available.
- The PPS requires that municipalities protect, improve and restore the quality and quantity of water. Land use planning mechanisms for changes to extraction below the water table should be addressed and approved by municipalities who are responsible for ensuring adequate quality and quantity of water to their communities. A review through an application for a zoning by-law amendment also provides municipalities with an opportunity to assess and prevent any potential threat or impacts to sourcewater and local municipal drinking water supplies.

Proposed Regulatory Amendments

3. Reviewing application requirements for new sites, including notification and consultation requirements

- Pre-consultation with agencies such as conservation authorities and municipalities should be a mandatory requirement to ensure that 'terms of reference' for technical reports are completed for new aggregate or quarry sites. This would ensure that applications include the required technical information prior to municipal and agency review and that they can be reviewed in a timely and efficient manner.

Cumulative Effects Assessments

- MNRF should develop cumulative effects assessment and data collection and sharing regulations and criteria for new aggregate or quarry sites for below water table extraction. At this time, there is no mention of cumulative effects assessments in the ERO proposal. In 2010, a document entitled “Cumulative Effects Assessment Best Practices Paper for Below-Water Sand and Gravel Extraction Operations in Priority Subwatersheds in the Grand River Watershed” was released. The document was completed in consultation with various provincial ministries and representatives of the Ontario Stone Sand and Gravel Association. It provides a framework for cumulative impacts to be assessed in a consistent manner and to guide decisions makers, such as municipal governments and the MNRF and Ministry of Environment, Conservation and Parks with responsibilities in this area. Eleven priority subwatersheds within the Grand River watershed were identified. A comprehensive data collection and data management process was to be developed and maintained by MNRF in consultation with the partners to facilitate collecting the appropriate data and sharing this information with aggregate resource applicants. This data process has yet to be established and it would provide an opportunity for a transparent and open data sharing framework to permit external stakeholders with access to information related to below water table aggregate and quarry applications and operations.

CA Review of Aggregate Resources Act Applications

Conservation Authorities should continue to review applications and amendments to existing licenses to address natural hazards and the potential for cumulative impacts within a subwatershed through the ARA applications and/or zoning by-law amendment process. Currently the GRCA review is streamlined to ensure that the appropriate agency provides comments on the issues or features associated with an application. For instance, municipalities in the watershed take the lead on commenting on source water and municipal drinking water and conservation authorities review applications to assess the potential for the creation of new natural hazards or the aggravation of existing natural hazards. The GRCA also provides comments related to natural hazards since ARA applications are exempt from the GRCA permit process e.g. floodplains, river valley slopes and wetlands. GRCA provides natural hazard management knowledge and a unique regional perspective that enhances consistency across municipal boundaries. GRCA also currently provides advisory comments to municipalities for Planning Act applications that are related to aggregate applications.

Financial implications:

Not applicable.

Other department considerations:

Source Protection and Resource Planning staff provided input to this report.

Prepared by:

Melissa Larion
Policy Planner

Approved by:

Nancy Davy
Director of Resource Management

Grand River Conservation Authority

Report number: GM-10-19-101
Date: October 25, 2019
To: Members of the Grand River Conservation Authority
Subject: 2020 Budget Update – General Municipal Levy Apportionment

Recommendation:

THAT Report GM-10-18-107 - 2019 Budget Update – General Municipal Levy Apportionment be received as information.

Summary:

The distribution of the proposed 2020 Municipal Levy to participating municipalities is attached, based on the first draft of 2020 Budget, as presented at the General Meeting on September 27, 2019.

Report:

The General Municipal Levy is allocated to participating municipalities based on Modified Current Value Assessment, which the Ministry of Environment, Conservation and Parks (MECP) provides to Conservation Authorities each year. The methodology for calculating the Modified Current Value Assessment and distributing the levy is outlined in Ontario Regulation 670/000, which is appended to this report. Grand River Conservation Authority recently received the Modified Current Value Assessment figures to be used for the 2020 Budget (2019 assessment) and the resulting allocation of the proposed 2020 General Levy is attached.

Financial implications:

The first draft of the 2020 Budget proposed a Municipal Levy of \$11,927,000, which represents an increase of \$291,000 (or 2.5%) over 2019. After allocating this amount in accordance with Regulation 670/00, individual municipalities will experience increases ranging from 1.0% to 13.9% compared to 2019.

Other department considerations:

Not applicable

Prepared by:

Karen Armstrong
Deputy CAO/ Secretary-Treasurer

Approved by:

Samantha Lawson
Chief Administrative Officer

Conservation Authorities Act
ONTARIO REGULATION 670/00
CONSERVATION AUTHORITY LEVIES

1. In this Regulation,

“current value assessment” means the current value assessment of land, determined under the provisions of the *Assessment Act*, for a given year;

“property class” means a class of real property prescribed under the *Assessment Act*. O. Reg. 670/00, s. 1.

2. (1) In determining the levy payable by a participating municipality to an authority for maintenance costs pursuant to subsection 27 (2) of the Act, the authority shall apportion such costs to the participating municipalities on the basis of the benefit derived or to be derived by each participating municipality determined,

(a) by agreement among the authority and the participating municipalities; or

(b) by calculating the ratio that each participating municipality’s modified assessment bears to the total authority’s modified assessment. O. Reg. 670/00, s. 2 (1).

(2) In determining the levy payable by a participating municipality to an authority for administration costs pursuant to subsection 27 (3) of the Act, the authority shall apportion such costs to the participating municipalities on the basis of the ratio that each participating municipality’s modified assessment bears to the total authority’s modified assessment. O. Reg. 670/00, s. 2 (2).

3. The following rules apply for the purposes of section 2:

1. The modified current value assessment is calculated by adding the current value assessments of all lands within a municipality all or part of which are within an authority’s jurisdiction and by applying the following factors to the current value assessment of the land in the following property classes:

Property Class	Factor
Residential/Farm	1
Multi-Residential	2.1
Commercial	2.1
Industrial	2.1
Farmlands	0.25
Pipe Lines	1.7
Managed Forests	0.25
New Multi-Residential	2.1
Office Building	2.1
Shopping Centre	2.1
Parking Lots and Vacant Land	2.1
Large Industrial	2.1

2. A participating municipality’s modified assessment is the assessment calculated by dividing the area of the participating municipality within the authority’s jurisdiction by its total area and multiplying that ratio by the modified current value assessment for that participating municipality.

3. The total authority’s modified assessment is calculated by adding the sum of all of the participating municipalities’ modified assessments for that authority. O. Reg. 670/00, s. 3.

4. An authority may establish a minimum sum that may be levied against a participating municipality within the authority’s jurisdiction. O. Reg. 670/00, s. 4.

Grand River Conservation Authority Summary of Municipal Levy - 2020 Budget

25-Oct-19

	% CVA in Watershed	2019 CVA (Modified)	CVA in Watershed	CVA-Based Apportionment	2018 Budget Matching Admin & Maintenance Levy	2020 Budget Non Matching Admin & Maintenance Levy	2020 Budget Capital Maintenance*	2020 Budget Total Levy	Actual 2019 Levy	% Change
Brant County	82.9%	6,445,704,057	5,343,488,664	2.80%	12,575	294,381	26,565	333,521	320,200	4.2%
Brantford City	100.0%	14,094,801,844	14,094,801,844	7.38%	33,169	776,505	70,073	879,747	859,526	2.4%
Amaranth Twp	82.0%	741,173,956	607,762,644	0.32%	1,430	33,483	3,022	37,935	36,818	3.0%
East Garafraxa Twp	80.0%	567,538,838	454,031,070	0.24%	1,068	25,013	2,257	28,338	27,694	2.3%
Town of Grand Valley	100.0%	508,048,182	508,048,182	0.27%	1,196	27,989	2,526	31,711	27,840	13.9%
Melancthon Twp	56.0%	548,535,978	307,180,148	0.16%	723	16,923	1,527	19,173	18,422	4.1%
Southgate Twp	6.0%	940,585,890	56,435,153	0.03%	133	3,109	281	3,523	3,437	2.5%
Haldimand County	41.0%	6,660,920,536	2,730,977,420	1.43%	6,427	150,454	13,577	170,458	166,879	2.1%
Norfolk County	5.0%	9,136,313,363	456,815,668	0.24%	1,075	25,167	2,271	28,513	27,947	2.0%
Halton Region	10.4%	43,072,861,004	4,486,635,761	2.35%	10,558	247,176	22,306	280,040	267,286	4.8%
Hamilton City	26.8%	88,141,299,524	23,577,797,623	12.34%	55,486	1,298,938	117,218	1,471,642	1,425,840	3.2%
Oxford County	37.5%	4,100,166,131	1,537,219,499	0.80%	3,618	84,688	7,642	95,948	92,876	3.3%
North Perth Twp	2.0%	2,050,788,963	41,015,779	0.02%	97	2,260	204	2,561	2,480	3.3%
Perth East Twp	40.0%	1,903,923,454	761,569,382	0.40%	1,792	41,956	3,786	47,534	45,247	5.1%
Waterloo Region	100.0%	97,165,516,725	97,165,516,725	50.85%	228,659	5,353,001	483,059	6,064,723	5,947,653	2.0%
Centre Wellington Twp	100.0%	4,825,004,290	4,825,004,290	2.53%	11,355	265,817	23,988	301,160	291,250	3.4%
Erin Twp	49.0%	2,434,448,511	1,192,879,770	0.62%	2,807	65,718	5,930	74,455	73,721	1.0%
Guelph City	100.0%	25,990,473,570	25,990,473,570	13.60%	61,164	1,431,856	129,213	1,622,233	1,576,986	2.9%
Guelph Eramosa Twp	100.0%	2,677,794,567	2,677,794,567	1.40%	6,302	147,524	13,313	167,139	163,892	2.0%
Mapleton Twp	95.0%	1,648,728,333	1,566,291,917	0.82%	3,686	86,289	7,787	97,762	94,062	3.9%
Wellington North Twp	51.0%	1,616,042,908	824,181,883	0.43%	1,940	45,405	4,097	51,442	50,151	2.6%
Puslinch Twp	75.0%	2,508,795,384	1,881,596,538	0.98%	4,428	103,660	9,354	117,442	115,793	1.4%
Total		317,779,466,008	191,087,518,099	100.00%	449,688	10,527,312	950,000	11,927,000	11,636,000	2.5%

*Capital Maintenance Levy represents levy allocated to maintenance of capital infrastructure, studies, and/or equipment.

Grand River Conservation Authority

Report number: GM-10-19-99
Date: October 25, 2019
To: Members of the Grand River Conservation Authority
Subject: Cash and Investment Status – September 2019

Recommendation:

THAT Report Number GM-10-19-99 Cash and Investment Status – September 2019 be received as information.

Summary:

The cash position included Notes Receivable of the Grand River Conservation Authority as at September 30, 2019 was \$32,295,449 with outstanding cheques written in the amount of \$123,825.

Report:

See attached.

Financial implications:

Interest rates, etc. are shown on the report.

Other department considerations:

Not applicable.

Prepared by:

Carol Anne Johnston
Senior Accountant

Sonja Radoja
Manager of Corporate Services

Approved by:

Karen Armstrong
Deputy CAO/Secretary Treasurer

Grand River Conservation Authority
Cash and Investments Status Report
September 30, 2019

BANK ACCOUNTS	Location	Type	Amount	Interest Rate
	CIBC	Current Account	5,071,679	2.15%
	RBC	Current Account	316,001	nil
	Wood Gundy	Current Account	0	0.20%
	CIBC - SPP Holding	Current Account	672,981	2.15%
TOTAL CASH - CURRENT ACCOUNT			6,060,661	

INVESTMENTS	Date Invested	Location	Type	Amount	Face Value Interest Rate	Yield Rate	Date of Maturity	2019 Total Interest Earned/ Accrued
	September 9, 2009	CIBC Renaissance	High Interest Savings Account	2,142,958	1.60%	1.60%	not applicable	32,131
	October 1, 2014	CIBC Trust Savings	High Interest Savings Account	497,701	1.60%	1.60%	not applicable	11,512
	July 15, 2016	One Investment Savings	High Interest Savings Account	4,222,129	2.415%	2.41%	not applicable	101,338
	September 3, 2015	CIBC	Step up bond	2,000,000	2.30%	2.30%	September 3, 2025	46,652
	October 14, 2015	Laurentian Bank	Bond	1,996,000	2.50%	2.62%	January 23, 2020	51,814
	March 1, 2016	CIBC	Bond	1,300,000	1.70%	2.00%	March 1, 2023	25,573
	September 16, 2016	CIBC	Bond	1,184,000	1.30%	1.30%	March 13, 2020	15,868
	August 24, 2017	Bank of Montreal	Bond	1,550,000	1.61%	2.01%	October 28, 2021	30,781
	March 15, 2018	Bank of Nova Scotia	Bond	2,000,000	3.036%	2.20%	October 18, 2019	36,266
	July 16, 2018	Bank of Nova Scotia	Bond	1,000,000	2.27%	2.23%	January 13, 2020	22,311
	October 11, 2018	National	Bond	2,000,000	2.404%	2.326%	October 28, 2019	38,388
	October 11, 2018	RBC	Bond	2,000,000	2.35%	2.34%	December 9, 2019	44,005
	October 11, 2018	Bank of Nova Scotia	Bond	2,000,000	2.27%	2.399%	January 13, 2020	47,953
	May 17, 2019	Bank of Nova Scotia	Bond	800,000	1.90%	2.150%	December 2, 2021	43,337
	June 17, 2019	Cdn Western Bank	Bond	1,542,000	2.788%	2.090%	September 13, 2021	96,641
TOTAL INVESTMENTS				26,234,788				\$644,570

TOTAL CASH AND INVESTMENTS	\$32,295,449
-----------------------------------	---------------------

* Reserve Balance at December 31st, 2018	23,677,015
--	------------

Investment By Institution

	% of Total Portfolio
C.I.B.C.	27%
Bank of Nova Scotia	22%
Bank of Montreal	6%
Royal Bank	8%
National	8%
Laurentian	8%
Cdn Western Bank	6%
One Investment Program	16%
	100%

* Reserve balances are reviewed annually by the Board in November.

Grand River Conservation Authority

Report number: GM-10-19-104

Date: October 25, 2019

To: Members of the Grand River Conservation Authority

Subject: Financial Summary for the Period Ending September 30, 2019

Recommendation:

THAT the Financial Summary for the period ending September 30, 2019 be approved.

Summary:

The Financial Summary includes the 2019 *actual* year-to-date income and expenditures. The budget approved at the February 22, 2019 General Meeting is included in the *Budget* column. The *Current Forecast* column indicates an estimate of income and expenditures for the whole year. At this time a net result of NIL at year-end is forecast.

Report:

- A. Self Generated Revenue increased by \$740,000.
 - Timber Sales Revenue increased by \$40,000 based on actual activity to date.
 - Conservation Area Revenue increased by \$700,000 to \$9,300,000 based on actual results to date plus projected revenue of \$150,000 for October to December.
- B. Operating Expenditures increased by \$143,615.
 - Water Resources - Planning & Environment expenses reduced by \$26,385.
 - Travel and conference expenses decreased by \$16,385 due to usage expected to be less than budgeted.
 - Compensation and benefit expenses decreased by \$10,000 due to staff vacancy and rate savings.
 - Forestry expenses reduced by \$25,000 due to staff vacancy.
 - Communications department expenses reduced by \$30,000.
 - Compensation and benefit expenses decreased by \$20,000 due to staff vacancy.
 - Printed Literature and Tours Expenses decreased by \$10,000.
 - Conservation Lands expenses reduced by \$25,000.
 - Operations Support expenses for advertising and printing decreased by \$25,000.

- Conservation Area expenses increased by \$250,000 due to increased activity. Expenses such as security, grounds maintenance, firewood, food concession, utilities, reservation fees and credit card fees increased.
- C. Capital Expenditures increased by \$125,000
- Flood Forecasting and Warning capital expenses increased by \$125,000 for the purchase of data loggers. Details outlined in September 27, 2019 board report 'Acquisition of River Level Measuring and Logging Equipment'.
- D. Net Transfer to Reserves increased by \$365,000.
- Transfer to Conservation Area reserve increased by \$450,000 due to net surplus forecast for operations.
 - Transfer to Forestry reserve increased by \$40,000 for timber sales revenue.
 - Transfer from the Gauge reserve increased by \$125,000 to fund data loggers as outlined above.

The Financial Summary is attached.

Financial implications:

The activity summarized will result in a net result of NIL at December 31, 2019.

Other department considerations:

The management committee and appropriate supervisory staff receive monthly financial reports and advise the finance department of applicable forecast adjustments.

Prepared by:

Sonja Radoja
Manager Corporate Services

Approved by:

Karen Armstrong
Secretary-Treasurer/Deputy CAO

GRAND RIVER CONSERVATION AUTHORITY

FINANCIAL SUMMARY - FORECAST

General Membership October 25, 2019

FORECAST - August 31st, 2019 - NET SURPLUS/(DEFICIT)

(\$106,385)

CHANGES - September 2019

Sch 1	Water Resources-Planning	\$16,385	Conference and Travel Expenses decreased	\$26,385
		\$10,000	Compensation and Benefit Expenses decreased (vacancy)	
Sch 2	Flood Forecasting & Warning	(\$125,000)	Capital Expenses increased - data loggers	\$0
		\$125,000	Use of Gauge Reserve increased	
Sch 5	Forestry	\$25,000	Compensation and Benefit Expenses decreased (vacancy)	\$25,000
Sch 7	Communications	\$20,000	Compensation and Benefit Expenses decreased (vacancy)	\$30,000
		\$10,000	Printed Literature and Tours Expenses decreased	
Sch 10	Conservation Lands	\$25,000	Operations Support - Advertising & Printing Expenses decreased	\$25,000
		\$40,000	Timber Revenue increased	
		(\$40,000)	Transfer to Forestry Reserve increased	
Sch 13	Conservation Areas	\$700,000	Conservation Area Revenue increased	\$0
		(\$250,000)	Conservation Area Expenses increased	
		(\$450,000)	Transfer to Conservation Area Reserve increased	

FORECAST - September 30th, 2019 - NET SURPLUS/(DEFICIT)

\$0

**GRAND RIVER CONSERVATION AUTHORITY
STATEMENT OF OPERATIONS
FOR THE PERIOD ENDING September 30th, 2019**

SCHEDULE		Actual 2018	Budget 2019	Actual YTD	Previous Forecast	Current Forecast	Forecast Change
REVENUE							
<u>Municipal</u>							
General Municipal Levy (Operating)	various	10,302,000	10,586,000	10,586,000	10,586,000	10,586,000	0
General Municipal Levy (Capital)	various	1,050,000	1,050,000	1,050,000	1,050,000	1,050,000	0
Special Municipal Levy	various	98,571	150,000	485	150,000	150,000	0
Other	various	1,023,016	870,000	1,697,827	870,000	870,000	0
		12,473,587	12,656,000	13,334,312	12,656,000	12,656,000	0
<u>Government Grants</u>							
MNRF Transfer Payments	various	871,073	871,073	449,688	449,688	449,688	0
Source Protection Program-Provincial	various	1,384,626	835,000	694,708	1,175,000	1,175,000	0
Other Provincial	various	944,800	1,177,500	1,142,296	1,377,500	1,377,500	0
Federal	various	441,116	250,000	430,196	280,000	280,000	0
		3,641,615	3,133,573	2,716,888	3,282,188	3,282,188	0
<u>Self Generated</u>							
User Fees and Sales							
<i>Enquiries and Permits</i>	4	458,583	466,000	410,981	466,000	466,000	0
<i>Plan Input and Review</i>	4	450,331	453,000	357,534	453,000	453,000	0
<i>Nursery and Woodlot Management</i>	5	499,498	465,000	453,440	465,000	505,000	40,000
<i>Consulting</i>	4	0	0	3,726	0	0	0
<i>Conservation Lands Income</i>	10	58,247	71,000	39,408	71,000	71,000	0
<i>Conservation Areas User Fees</i>	13	9,160,051	8,600,000	9,166,905	8,600,000	9,300,000	700,000
<i>Nature Centres and Camps</i>	8	983,252	1,000,500	871,792	1,000,500	1,000,500	0
<i>Merchandising and Sales</i>	8	1,926	0	57	0	0	0
Property Rentals	11	2,888,225	2,875,000	2,279,653	2,875,000	2,875,000	0
Hydro Generation	12	556,736	473,000	420,265	473,000	473,000	0
Land Sales	10	1,166,343	0	0	0	0	0
Grand River Conservation Foundation	various	421,413	454,000	104,862	454,000	454,000	0
Donations	various	158,284	426,000	281,563	426,000	426,000	0
Landowner Contributions	5	199,269	200,000	181,329	200,000	200,000	0
Investment Income	14	555,037	450,000	360,450	450,000	450,000	0
Miscellaneous Income	various	17,897	48,000	14,015	48,000	48,000	0
Total Self-Generated Revenue		17,575,092	15,981,500	14,945,980	15,981,500	16,721,500	740,000
TOTAL REVENUE		33,690,294	31,771,073	30,997,180	31,919,688	32,659,688	740,000

GRAND RIVER CONSERVATION AUTHORITY
STATEMENT OF OPERATIONS
FOR THE PERIOD ENDING September 30th, 2019

	SCHEDULE	Actual 2018	Budget 2019	Actual YTD	Previous Forecast	Current Forecast	Forecast Change
EXPENSES							
OPERATING							
Water Resources Planning & Environment	1	1,981,020	2,243,200	1,596,959	2,198,200	2,171,815	(26,385)
Flood Forecasting and Warning	2	739,376	801,000	565,610	801,000	801,000	0
Water Control Structures	3	1,712,256	1,723,900	1,230,634	1,723,900	1,723,900	0
Resource Planning	4	1,942,897	2,084,600	1,346,493	1,984,600	1,984,600	0
Forestry & Conservation Land Property Taxes	5	1,422,785	1,411,400	1,043,761	1,396,400	1,371,400	(25,000)
Conservation Services	6	803,924	885,200	633,499	885,200	885,200	0
Communications & Foundation	7	613,385	733,900	434,373	678,900	648,900	(30,000)
Environmental Education	8	1,420,157	1,382,400	1,058,194	1,382,400	1,382,400	0
Corporate Services	9	2,922,538	3,797,768	3,096,174	4,292,768	4,292,768	0
Conservation Lands	10	1,897,866	2,095,700	1,398,470	2,050,700	2,025,700	(25,000)
Property Rentals	11	1,596,859	1,594,700	1,101,447	1,594,700	1,594,700	0
Hydro Production	12	134,677	133,000	83,906	133,000	133,000	0
Conservation Areas	13	7,732,014	7,585,000	6,466,594	7,585,000	7,835,000	250,000
Miscellaneous	14	63,754	70,000	54,692	70,000	70,000	0
Information Systems	16	1,133,065	1,243,000	846,591	1,243,000	1,243,000	0
Motor Pool	16	878,525	908,700	640,233	908,700	908,700	0
Less: Internal Charges (IS & MP)	16	(2,011,590)	(2,151,700)	(1,486,824)	(2,151,700)	(2,151,700)	0
Total OPERATING Expenses		24,983,508	26,541,768	20,110,806	26,776,768	26,920,383	143,615
CAPITAL							
Water Resources Planning & Environment	1	97,368	110,000	80,990	110,000	110,000	0
Flood Forecasting and Warning	2	161,212	190,000	125,984	190,000	315,000	125,000
Water Control Structures	3	1,274,516	1,500,000	1,482,445	2,900,000	2,900,000	0
Nature Centres	8	0	0	0	0	0	0
Conservation Areas	13	1,791,805	2,590,000	1,132,885	3,555,000	3,555,000	0
Corporate Services	9	0	0	0	0	0	0
Information Systems	16	229,951	200,000	86,295	200,000	200,000	0
Motor Pool	16	435,669	350,000	443,113	350,000	350,000	0
Less: Internal Charges (IS & MP)	16	(422,012)	(342,300)	(983,944)	(342,300)	(342,300)	0
Total Capital Expenses		3,568,509	4,597,700	2,367,768	6,962,700	7,087,700	125,000
SPECIAL							
Water Resources Planning & Environment	1	326,115	340,000	175,354	340,000	340,000	0
Flood Forecasting and Warning	2	425,964	560,000	275,717	560,000	560,000	0
Forestry	5	137,911	130,000	143,712	130,000	130,000	0
Conservation Services	6	1,082,201	921,000	672,339	921,000	921,000	0
Communications	7	0	0	0	0	0	0
Environmental Education	8	0	0	0	0	0	0
Conservation Land Purchases/Land Sale Expenses	10	269,473	0	842,144	820,000	820,000	0
Conservation Lands	10	365,863	750,000	302,972	750,000	750,000	0
Property Development	11	0	50,000	0	50,000	50,000	0
Hydro Generation	12	80,721	0	0	0	0	0
Miscellaneous	14	28,236	35,000	31,704	35,000	35,000	0
Source Protection Program	15	1,384,626	835,000	732,503	1,175,000	1,175,000	0
Total SPECIAL PROJECTS Expenses		4,101,110	3,621,000	3,176,445	4,781,000	4,781,000	0
Total Expenses		32,653,127	34,760,468	25,655,019	38,520,468	38,789,083	268,615
Gross Surplus		1,037,167	(2,989,395)	5,342,161	(6,600,780)	(6,129,395)	471,385
Prior Year Surplus Carryforward		412,314	469,695	469,695	469,695	469,695	0
Net Funding FROM/(TO) Reserves		(979,786)	2,519,700	(454,536)	6,024,700	5,659,700	(365,000)
NET SURPLUS		469,695	0	5,357,320	(106,385)	(0)	106,385

Grand River Conservation Authority

Report number: GM-10-19-100
Date: October 25, 2019
To: Members of the Grand River Conservation Authority
Subject: 2020 Board Meeting Schedule

Recommendation:

THAT the Meeting Schedule for 2020 Grand River Conservation Authority General Membership meetings be approved.

Summary:

Not applicable

Report:

The General Membership of the Grand River Conservation Authority meets on the fourth Friday of each month at 9:30 a.m. unless there is a conflict with a statutory holiday. The only conflict in 2020 is the December meeting, which has been moved to the third Friday (has been the second week in past).

Other significant events which have been taken into consideration are:

- ROMA Conference: January 19-21, 2020
- AMO Conference: August 16-19, 2020
- Latornell Conservation Symposium: normally the third week of November

Additional events, such as a Special Budget Meeting, tours and special days, may be scheduled as needed during the year. The Audit Committee has regularly scheduled meetings on the Wednesday one week prior to the Annual General Meeting of the General Membership, and again immediately following the November meeting of the General Membership.

It has been suggested by some Members that one of the meetings in either July or August could be eliminated. Subject to Board approval, staff can modify report timelines to implement this scheduling change.

All meetings are held in the Auditorium at the Grand River Conservation Authority Administration Office, 400 Clyde Road, Cambridge, Ontario. The proposed 2019 meeting dates and times are as follows:

DATE	TIME	MEETING
Friday, January 24, 2020	9:30 a.m.	General Membership (and elections of officers)

DATE	TIME	MEETING
Wednesday, February 12, 2020	9:30 a.m.	Audit Committee
Friday, February 28, 2020	9:30 a.m.	Annual General Meeting
Friday, March 27, 2020	9:30 a.m.	General Membership
Friday, April 24, 2020	9:30 a.m.	General Membership
Friday, May 22, 2020	9:30 a.m.	General Membership
Friday, June 26, 2020	9:30 a.m.	General Membership
Friday, July 24, 2020*	9:30 a.m.	General Membership
Friday, August 21, 2020*	9:30 a.m.	General Membership
Friday, September 25, 2020	9:30 a.m.	General Membership
Friday, October 23, 2020	9:30 a.m.	General Membership
Friday, November 27, 2020	9:30 a.m.	General Membership
Friday, November 27, 2020	11:30 a.m.*	Audit Committee <i>*immediately following GM</i>
Friday, December 18, 2020*	9:30 a.m.	General Membership

**Board direction required*

Financial implications:

Not applicable

Other department considerations:

Not applicable

Prepared by:

Karen Armstrong
Deputy CAO/Secretary-Treasurer

Approved by:

Samantha Lawson
Chief Administrative Officer


GRCA General Membership Meetings Calendar


2020

January s m t w t f s 5 6 7 8 9 10 11 12 13 14 15 16 17 18 19 20 21 22 23 GM 25 26 27 28 29 30 31	February s m t w t f s 2 3 4 5 6 7 8 9 10 11 12 13 14 15 16 17 18 19 20 21 22 23 24 25 26 27 GM 29	March s m t w t f s 1 2 3 4 5 6 7 8 9 10 11 12 13 14 15 16 17 18 19 20 21 22 23 24 25 26 GM 28 29 30 31	April s m t w t f s 5 6 7 8 9 10 11 12 13 14 15 16 17 18 19 20 21 22 23 GM 25 26 27 28 29 30
May s m t w t f s 3 4 5 6 7 8 9 10 11 12 13 14 15 16 17 18 19 20 21 GM 23 24 25 26 27 28 29 30 31	June s m t w t f s 7 8 9 10 11 12 13 14 15 16 17 18 19 20 21 22 23 24 25 GM 27 28 29 30	July s m t w t f s 5 6 7 8 9 10 11 12 13 14 15 16 17 18 19 20 21 22 23 * 25 26 27 28 29 30	August s m t w t f s 2 3 4 5 6 7 8 9 10 11 12 13 14 15 16 17 18 19 20 * 22 23 24 25 26 27 28 29 30 31
September s m t w t f s 6 7 8 9 10 11 12 13 14 15 16 17 18 19 20 21 22 23 24 GM 26 27 28 29 30	October s m t w t f s 4 5 6 7 8 9 10 11 12 13 14 15 16 17 18 19 20 21 22 GM 24 25 26 27 28 29 30 31	November s m t w t f s 1 2 3 4 5 6 7 8 9 10 11 12 13 14 15 16 17 18 19 20 21 22 23 24 25 26 GM 28 29 30	December s m t w t f s 6 7 8 9 10 11 12 13 14 15 16 17 GM 19 20 21 22 23 24 25 26 27 28 29 30 31

 Agenda Published

 General Membership Meeting

 Audit Committee

 Holiday/Head Office Closed

 *July and August are tentative*

Grand River Conservation Authority

Report number: GM-10-19-102

Date: October 25, 2019

To: Members of the Grand River Conservation Authority

Subject: Current Watershed Conditions as of October 16, 2019

Recommendation:

That Report Number GM-10-19-102 – Current Watershed Conditions as of October 16, 2019 be received as information.

Report:

Precipitation

September was a fairly dry month with many of the watershed rain gauges reporting totals below the long term average. The Laurel Creek rain gauge recorded less than 50% of normal rainfall for September. Other rain gauges were close to or above the long term average, including Conestogo and Brantford.

October to date has been quite a bit wetter than September with many of the watershed rain gauges reporting above the normal precipitation for the first half of the month. The rain gauge at Guelph Dam recorded the most rain with 75mm as of 8am on October 16th. This is close to the long term average for October of 78mm. The northern part of the watershed continues to be dry with the Luther Dam climate station reporting below average precipitation since the start of June.

Table 1 includes monthly and recent precipitation trends for select watershed climate stations. Monthly precipitation at the Shand Dam climate station from 2015 to 2019 is shown in **Figure 1**.

Table 1: Precipitation Averages at Watershed Climate Stations

Station	Monthly Precipitation		Percentage of Long Term Average					
	16-Oct (mm)	Long Term Average (mm)	Current Half Month	Last Full Month	Last 3 Full Months	Last 6 Full Months	Last 12 Full Months	Last 15 Full Months
Shand	32.1	84.2	76%	89%	97%	103%	115%	105%
Conestogo	49.3	93.1	106%	98%	78%	95%	97%	92%
Guelph	74.6	77.9	191%	72%	87%	112%	116%	109%
Luther	35.5	89.2	80%	82%	77%	91%	101%	101%
Woolwich	34.4	68.1	101%	61%	68%	93%	102%	103%
Laurel	56.4	85.2	132%	48%	61%	87%	105%	102%
Shades	64.0	80.0	160%	92%	111%	118%	117%	116%
Brantford	48.0	69.7	138%	103%	93%	121%	116%	112%

Air Temperatures

The average monthly temperature in September was about 0.4 degrees above the long term average at the Shand Dam climate station. The daytime high temperature in September averaged 21 degrees and the overnight low averaged 10 degrees. Southern parts of the watershed were a bit hotter with the daytime high temperatures at the Shades Mill climate station averaging 24 degrees and overnight low temperatures close to 12 degrees. The Shades Mill station recorded a total of 4 days with temperatures reaching 30 degrees in September.

The first two weeks of October have also had above average temperatures across the watershed, with average temperatures about 0.7 degrees above the long term average at Shand Dam and about 1.5 degrees above the long term average at Shades Mill.

Figure 2 presents recent mean monthly air temperature departures from the long term average recorded at Shand Dam.

Lake Erie Conditions

The level of Lake Erie continues to be at a very high level, although it is much lower than the record levels recorded during the summer. The average monthly water level at Port Colborne in September was 174.85m. Lake levels have continued to decline with the average level for the first two weeks of October at 174.75m. The lake level is currently approximately 0.7m above the long term average.

Forecast lake levels from Canadian Hydrographic Survey from October 1st indicate that the lake level should continue to decline into the late fall, but will remain above the long term average. The high lake level increases the risk of shoreline flooding and erosion from wind and wave run up. An updated High Lake Level Outlook message was issued on October 11th warning of the increased potential for shoreline flooding due to the high static water levels.

Figure 3 presents current and forecast Lake Erie level from the Canadian Hydrographic Service.

Groundwater Levels

Groundwater levels in the monitoring well near Burford continue to decline, but the rate of decline is much less than it was over the summer period and now follows the normal rate of decline for this time of year. Water levels peaked in the area in June and dropped rapidly in August and early September. Late July and most of August were fairly dry in this area and water use for agriculture increased. Water levels in this overburden aquifer respond to high water use in this region as well as to changes in precipitation.

Figure 4 shows the average monthly water level data for the Burford monitoring well for the current year, previous year and extreme years, against the long term average.

Reservoir Conditions

The Conestogo reservoir is below the normal operating level, while the Shand reservoir is slightly below the operating level for this time of the year. Both the Guelph and Luther reservoirs are at normal operating levels.

Water stored in the reservoirs continues to be used to augment river flows downstream. Downstream flow targets are less in October than during the summer months resulting in lower discharges required from the reservoirs. Water levels in the large reservoirs will be stabilised over the next month in preparation for winter freeze up.

Reservoir levels are shown in **Figures 5 and 6** for the four large reservoirs.

Long Range Outlook

The three month forecast for October through December from Environment Canada is for warmer and wetter than average conditions. Forecasts for the start of winter, December, are for variable weather patterns and a mix of mild and cold weather throughout the month.

Flood Preparedness

Conditions are being monitored closely. Staff continue to hold weekly meetings as part of overall succession planning initiatives, dam operations and flood emergency preparedness.

A number of staff will be attending Emergency Management for Dam Safety training on October 21st. This workshop is put on by the Canadian Dam Association and the Ontario Waterpower Association and includes such topics as risk assessment, maintenance of readiness, response and recovery. In addition, the workshop provides an understanding of the roles and responsibilities of the dam owner and stakeholders, focusing on the importance of community engagement and the ways to promote community resilience.

Financial implications:

Not applicable

Other department considerations:

Not applicable

Prepared by:

Stephanie Shifflett
Water Resources Engineer

Approved by:

Dwight Boyd
Director of Engineering

Figure 1: Precipitation at Shand Dam 2015 to October 16 2019

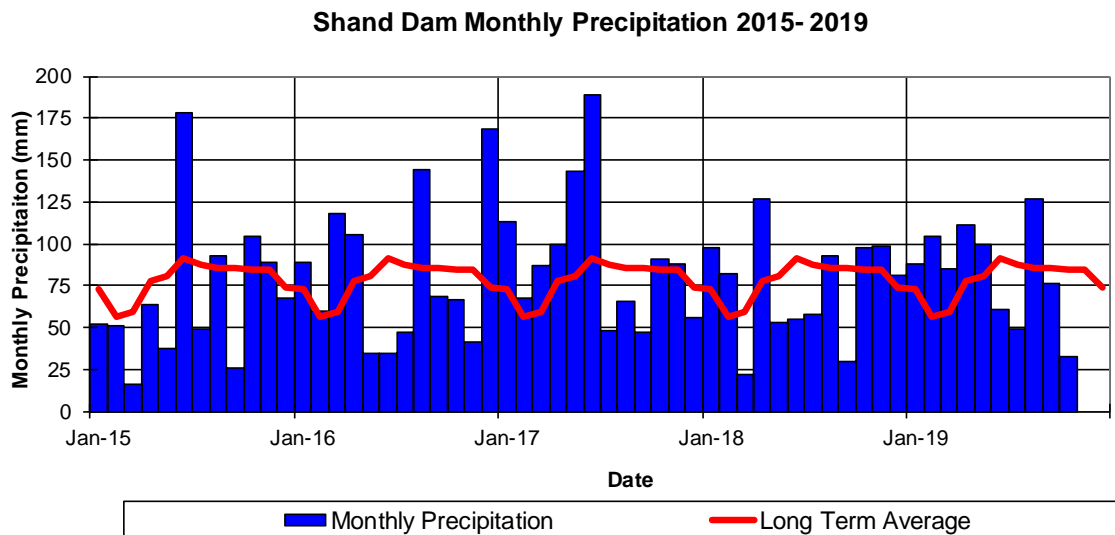
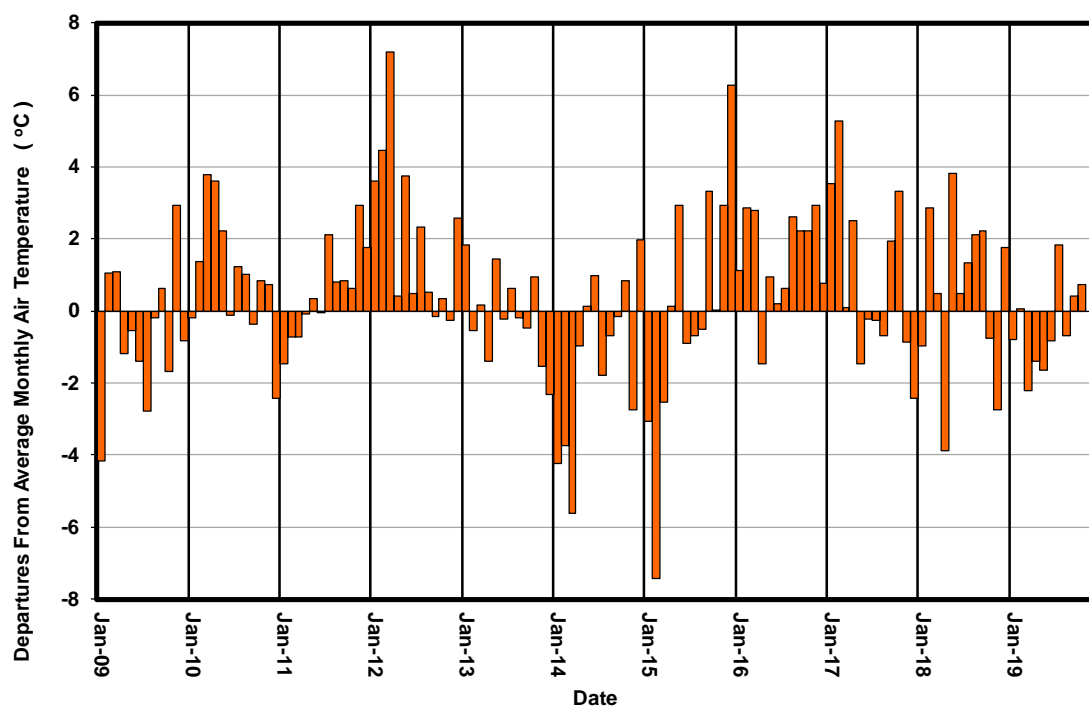


Figure 2: Departures from Average Air Temperatures at Shand Dam



*only partial data available for October 2019

Figure 3: Forecasted Lake Erie Levels

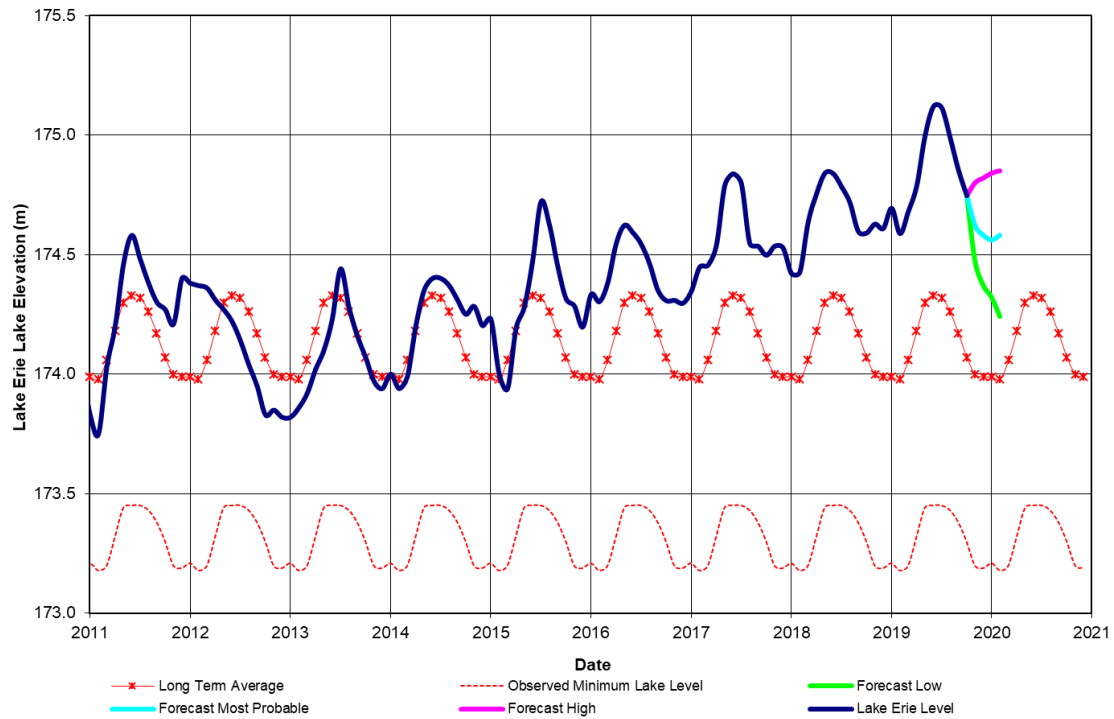


Figure 4: Groundwater Monitoring Levels

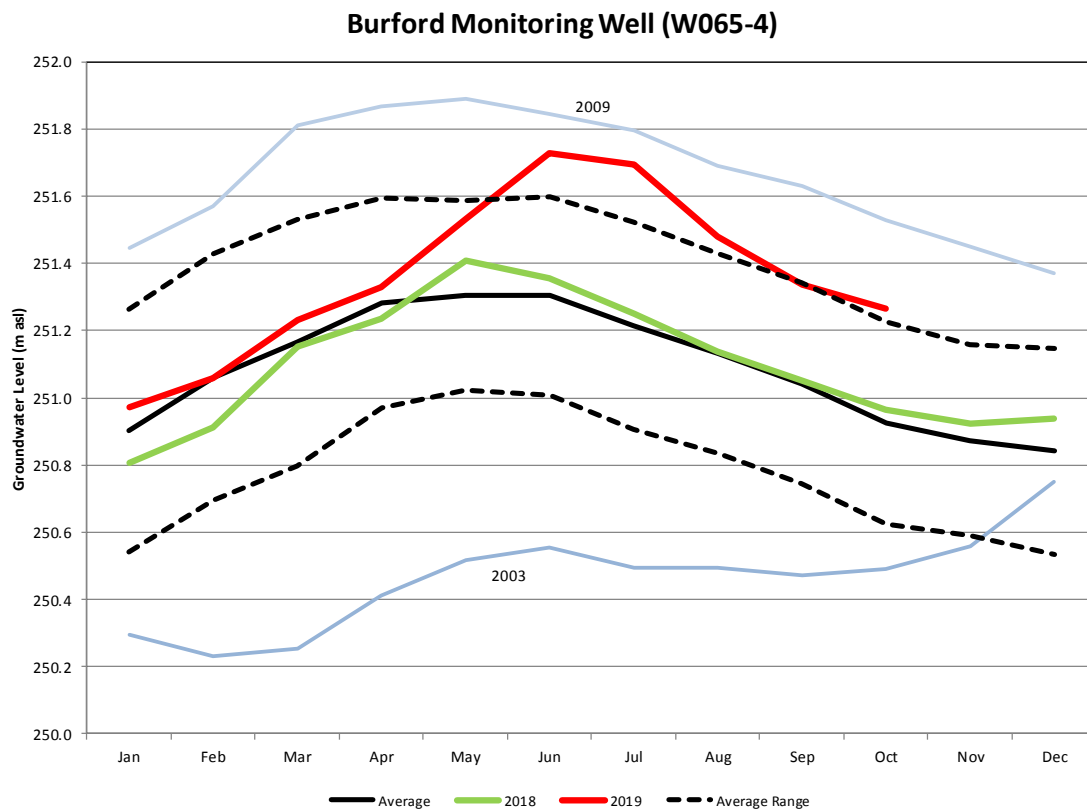


Figure 5: Shand and Conestogo Reservoir Elevation Plots

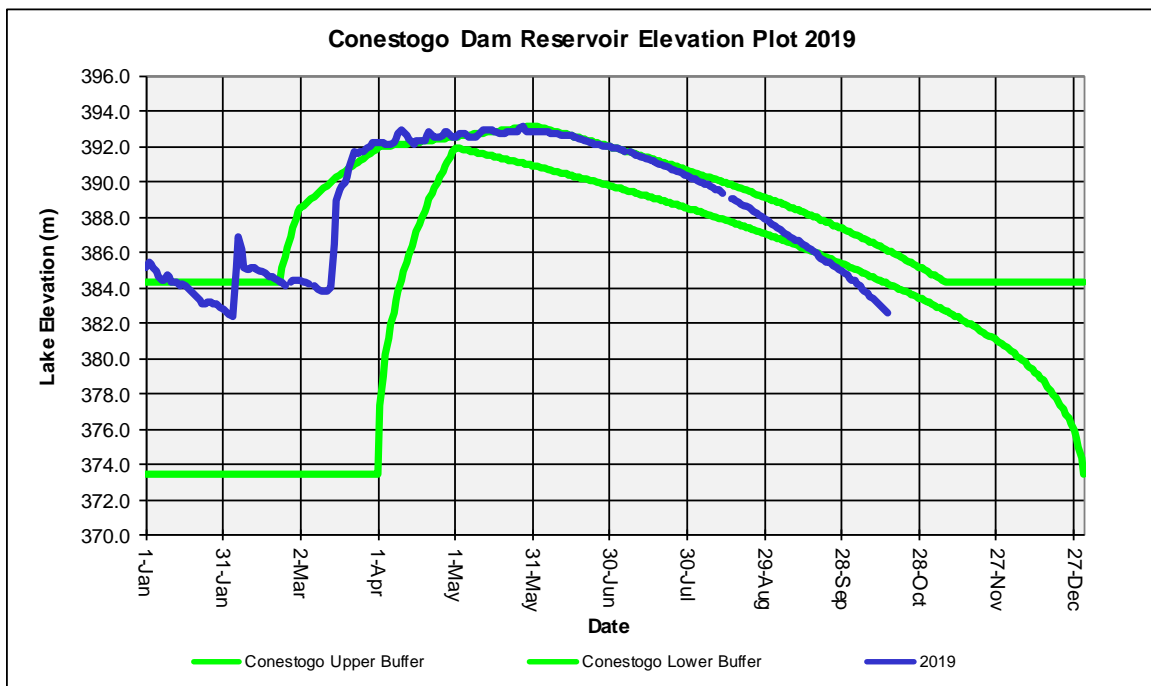
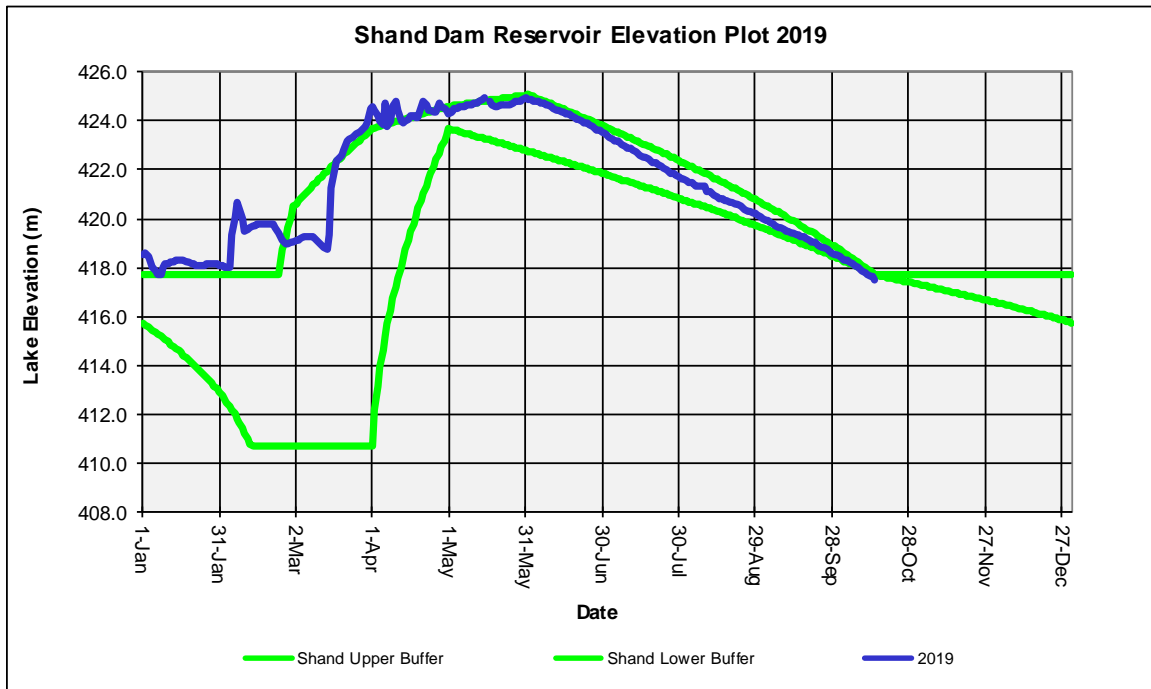
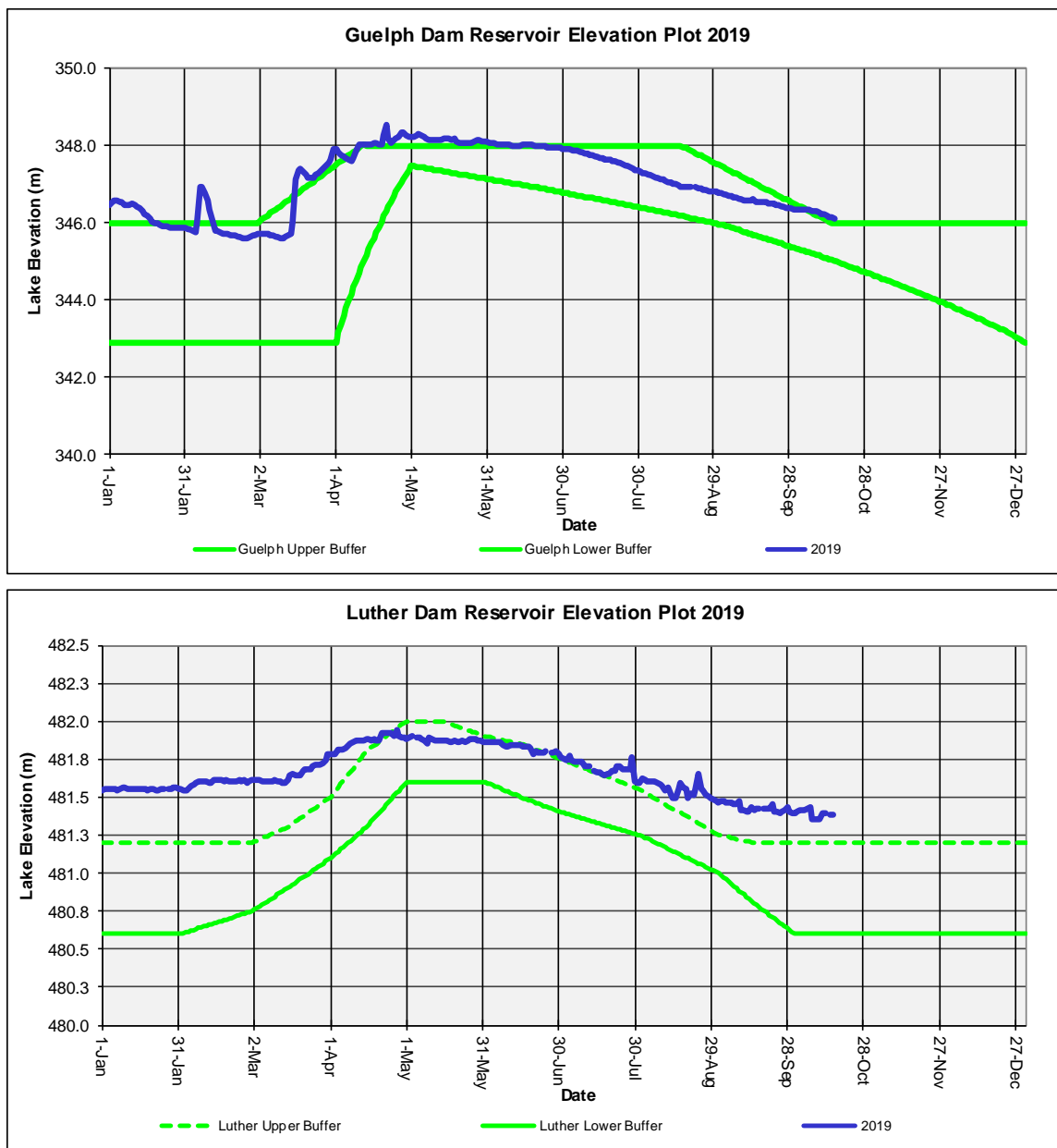


Figure 6: Guelph and Luther Reservoir Elevation Plots



Luther Dam Operating Curves

Luther Dam primarily provides a flow augmentation function to the upper Grand River and to Shand Dam. While it does provide some benefits from a flood control perspective, these benefits are limited due to the small drainage area regulated by Luther Dam.

The buffers between March 1st and September 30th define the operating range to meet downstream low flow targets. The lower buffer defines the lowest operating range for flow augmentation before reducing downstream flow augmentation targets. The earlier winter (January 1st to March 1st) and late fall (October 1st to December 31st) upper buffer curve is defined from ecologic considerations from the Luther Marsh Master Plan.