



**Grand River Conservation Authority  
Agenda - Source Protection Authority Meeting**

Friday, April 26, 2024

Immediately preceding the meeting of the General Membership  
Auditorium

Grand River Conservation Authority  
400 Clyde Road, Box 729  
Cambridge, ON N1R 5W6

---

**Pages**

1. **Call to Order**

2. **Certification of Quorum**

3. **Chair's Remarks**

4. **Review of Agenda**

THAT the agenda for the Source Protection Authority Meeting be approved as circulated.

5. **Declarations of Pecuniary Interest**

6. **Minutes of the Previous Meetings**

1

THAT the minutes of the Source Protection Authority Meeting of September 22, 2023 be approved as circulated.

7. **Business Arising from Previous Minutes**

8. **Hearing of Delegations**

9. **Presentations**

10. **Correspondence**

THAT Correspondence from Lake Erie Region Source Protection Committee regarding the Source Protection Plan Annual Progress Report be received as information.

- a. Lake Erie Region Source Protection Committee - Source Protection Plan Annual Progress Report

4

Appendices A and B referenced within the correspondence are included with the report at agenda item 12.a.

**11. 1st and 2nd Reading of By-Laws**

**12. Reports**

- a. SPA-04-24-01 - Submission of the 2023 Grand River Annual Progress Report

8

THAT Report Number SPA-04-24-01 regarding the 2023 Grand River Annual Progress Report be received as information;

AND THAT staff be directed to submit the 2023 Grand River Annual Progress Report and supporting information to the Ministry of the Environment, Conservation and Parks.

**13. Committee of the Whole**

**14. General Business**

**15. 3rd Reading of By-Laws**

**16. Other Business**

**17. Closed Meeting - Not required.**

**18. Next Meeting - At the Call of the Chair**



## Grand River Conservation Authority Minutes - Source Protection Authority Meeting

Date: September 22, 2023  
Time: 9:30 am  
Location: Hybrid Meeting of the General Membership  
GRCA Administration Centre  
Zoom Virtual Meeting

Members Present Bruce Banbury, Christine Billings, John Challinor II, Ken Yee Chew, Brian Coleman, Kevin Davis, Mike Devine, Jim Erb, Susan Foxton, Guy Gardhouse, Gord Greavette, Colleen James, Daniel Lawrence, Dave Miller, Natasha Salonen, Rob Shirton, Jerry Smith, Shawn Watters, Chris White, Kari Williams, Pam Wolf

Members Regrets Gino Caputo, Doug Craig, Lisa Hern, Sandy Shantz, Alex Wilson  
Staff Samantha Lawson, Karen Armstrong, Beth Brown, Ron Gasparetto, Brandon Heyer, Janet Ivey, Katelyn Lynch, Sonja Radoja, Lisa Stocco, Pam Walther-Mabee, Eowyn Spencer, Marijan Blazeovic, Michael Penney, David Townsend, Kevin Tupman, Ron Wu-Winter, Shari Dahmer

Others Marty Cotter

### 1. Call to Order

The Meeting was called to order by the Chair at 9:30 a.m.

### 2. Certification of Quorum

The Secretary-Treasurer certified quorum with more than half of the Members present. A total of 21 Members attended the meeting.

S.Foxton and N.Salonen joined the meeting at 9:31 a.m.

### 3. Chair's Remarks

The Chair welcomed the Members and made the following remarks:

- The GRCA received site plan approval for the new Guelph Lake Nature Centre on September 20th, and staff are working with the municipality to obtain the building permit.

- Conservation Ontario Council will meet on September 25th. Agenda highlights include the 2024 budget and coordinated submissions on ERO postings affecting conservation authorities.

**4. Review of Agenda**

SPA-23-11

**Moved By** John Challinor II

**Seconded By** Bruce Banbury

THAT the agenda for the Source Protection Authority Meeting be approved as circulated.

**Carried**

**5. Declarations of Pecuniary Interest**

There were no declarations of pecuniary interests made in relation to the matters to be dealt with.

**6. Minutes of the Previous Meetings**

SPA-23-12

**Moved By** Natasha Salonen

**Seconded By** Brian Coleman

THAT the minutes of the Source Protection Authority Meeting of May 26, 2023 be approved as circulated.

**Carried**

**7. Business Arising from Previous Minutes**

There was no business arising from the minutes of the previous meeting.

**8. Hearing of Delegations**

There were no Delegations.

**9. Presentations**

There were no Presentations.

**10. Correspondence**

None.

**11. 1st and 2nd Reading of By-Laws**

None.

**12. Reports**

**12.1 SPA-09-23-01 - Source Protection Committee Rules of Procedure**

There were no questions or concerns with this report.

SPA-23-13

**Moved By** John Challinor II

**Seconded By** Colleen James

THAT the Grand River Source Protection Authority approve the proposed amendments to the Source Protection Committee Rules of Procedure.

**Carried**

**12.2 SPA-09-23-02 - Source Protection Committee Member Appointments**

There were no questions or concerns with this report.

SPA-23-14

**Moved By** Gord Greavette

**Seconded By** Susan Foxtan

THAT the Grand River Source Protection Authority appoint Geoff Moroz to the Lake Erie Region Source Protection Committee for a four-year term, as municipal representative for the Region of Waterloo;

THAT the Grand River Source Protection Authority appoint Ian Macdonald to the Lake Erie Region Source Protection Committee for a four-year term, as an economic representative for business and industry;

THAT the Grand River Source Protection Authority appoint Linda Dickson and Chris Gerrits to the Lake Erie Region Source Protection Committee for a four-year term, as public interest representatives;

AND THAT the Grand River Source Protection Authority extend the appointment of Alan Dale as a public interest representative to the Lake Erie Region Source Protection Committee for a year, expiring in November 2024.

**Carried**

**13. Committee of the Whole**

Not required.

**14. General Business**

There was no General Business.

**15. 3rd Reading of By-Laws**

None.

**16. Other Business**

There was no Other Business.

**17. Closed Meeting - Not required.**

There was no closed meeting.

**18. Next Meeting - At the Call of the Chair**

At the call of the Chair.

**19. Adjourn**

The meeting was adjourned at 9:33 a.m.

SPA-23-15

**Moved By** Brian Coleman

**Seconded By** Jerry Smith

THAT the meeting of the Source Protection Authority be adjourned.

**Carried**

\_\_\_\_\_  
Chair

\_\_\_\_\_  
Secretary-Treasurer

April 9, 2024

Chris White  
Chair, Grand River Source Protection Authority  
400 Clyde Road, PO Box 729  
Cambridge ON, N1R 5W6

Dear Chair White,

**RE: Annual Progress Reporting**

---

The Grand River Source Protection Plan (the Plan) has been in effect since 2016 with the primary objective to protect current and future sources of drinking water from contamination and overuse.

In accordance with Ontario Regulation 287/07 s.52, the Grand River Source Protection Authority (SPA) is required to submit an Annual Progress Report on implementation of the Plan to the Ministry of the Environment, Conservation and Parks (MECP) by May 1<sup>st</sup> of each year. This report is comprised of the Grand River Annual Progress Report (**Appendix A**) and the Supplemental Form (**Appendix B**) and reflects implementation efforts from January 1 to December 31, 2023.

On March 28, 2024 the Lake Erie Region Source Protection Committee (SPC) passed the following resolution:

THAT in the opinion of the Lake Erie Region Source Protection Committee, implementation of the Grand River Source Protection Plan is progressing well but remains short of target on achieving plan objectives;

AND THAT the Lake Erie Region Source Protection Committee direct staff to present the 2023 Annual Progress Report to the Source Protection Authority for submission.

As such, this letter serves as notice of submission of the 2023 Annual Progress Report and Supplemental Form to the Grand River SPA, as per the annual reporting administrative protocol adopted by the Lake Erie Region Management Committee (Report No. 17-01-03).

**Achievement of Source Protection Plan Objectives:**

It is the opinion of the SPC that implementation of the Plan is progressing well but remains short of target on achieving plan objectives.

When the source protection plan came into effect in 2016, 7,449 Existing significant drinking water threats were identified. “Existing” threats are, in general terms, activities that were occurring on the landscape before the Source Protection Plan was approved. Since then, amendments to the Grand River Source Protection Plan in 2019, 2020, 2021, and 2022 have resulted in an increase to the number of Existing significant drinking water threats.

A total of 14,770 potential Existing significant drinking water threats have been identified in the Grand River Source Protection Area as of December 31, 2023. Of these, 2,332 threats have been determined through field verification to no longer exist because the activity was not actually engaged in after all, or is no longer engaged in, at a particular location. A total of 5,455 existing threats have been managed and no longer pose a significant risk to municipal drinking water sources.

All municipalities in our Source Protection Area have processes in place to ensure planning decisions conform to our Source Protection Plan and are managing or prohibiting new threats as appropriate. Of legally-binding plan policies that address significant drinking water threats, 99% are implemented, in progress, or implemented because policy outcome(s) have been evaluated and it is determined that no further action(s) is required.

The increase in the number of potential Existing threats in recent years has substantially increased the workload for municipalities. Municipalities have also experienced an increase in the number of development reviews that are required to be screened to identify and manage or prohibit new threats in accordance with source protection plan policies. Risk Management Officials continue to prioritize risk management measures as appropriate, but progress is slow.

The Grand River SPA is now tasked with considering the Annual Progress Report and submitting it to MECP, along with any comments the SPA wishes to make.

If you have any questions regarding this letter or the Grand River Annual Progress Report and Supplemental Form, please contact Shari Dahmer 519-621-2763 ext. 2303 or [sdahmer@grandriver.ca](mailto:sdahmer@grandriver.ca).

Sincerely,

A handwritten signature in cursive script that reads "Alan Dale".

Alan Dale  
Acting Chair, Lake Erie Region Source Protection Committee

c.c. Samantha Lawson, CAO, Grand River Conservation Authority

# **Appendix A**

**2023 Annual Progress Report – Grand River Source Protection Area**



# **Appendix B**

**2023 Supplemental Form – Grand River Source Protection Area**

# Grand River Source Protection Authority

**Report number:** SPA-04-24-01

**Date:** April 26, 2024

**To:** Members of the Grand River Source Protection Authority

**Subject:** Submission of the 2023 Grand River Annual Progress Report

---

## Recommendation:

THAT Report Number SPA-04-24-01 regarding the 2023 Grand River Annual Progress Report be received as information;

AND THAT staff be directed to submit the 2023 Grand River Annual Progress Report and supporting information to the Ministry of the Environment, Conservation and Parks.

## Summary:

Annual Progress Reports on the implementation of drinking water source protection plans must be submitted to the Ministry of the Environment, Conservation and Parks (MECP) by May 1st of each year.

The Lake Erie Region Source Protection Committee has assessed implementation progress in the Grand River Source Protection Area as “Progressing Well / Short of Target” in 2023. Of legally binding policies that address significant drinking water threats, 99% are implemented or in progress.

The Grand River Source Protection Authority has the responsibility to submit the 2023 Grand River Annual Progress Report to the Director of Conservation and Source Protection, MECP, along with any comments if desired.

## Report:

### Background

Section 46 of the *Clean Water Act, 2006* requires Source Protection Authorities to submit Annual Progress Reports on source protection plan implementation to the MECP by May 1<sup>st</sup> of the following year. The 2023 Annual Progress Report reflects implementation efforts up to December 31, 2023.

MECP provides two prescribed templates for annual reporting:

- 1) Annual Progress Report, a public facing document that provides valuable information about the implementation of the Grand River Source Protection Plan and overall success of the program (**Appendix A**); and,
- 2) Supplemental Form, a MECP tool for collecting information from implementing agencies (**Appendix B**).

### Implementation Progress

When the source protection plan came into effect in 2016, 7,449 Existing significant drinking water threats were identified. “Existing” threats are, in general terms, activities that were occurring on the landscape before the Source Protection Plan was approved. Since then, amendments to the Grand River Source Protection Plan in 2019, 2020, 2021, and 2022 have resulted in an increase to the number of Existing significant drinking water threats.

A total of 14,770 potential existing significant drinking water threats have been identified in the Grand River Source Protection Area as of December 31, 2023. Of these threats, 2,332 have been verified in the field to no longer exist because the activity never occurred, or is no longer occurring, at a particular location. A total of 5,455 existing threats have been managed and no longer pose a significant risk to municipal drinking water sources.

Of legally binding policies that address significant drinking water threats, 99% are implemented, in progress, or implemented because policy outcomes have been evaluated and it has been determined that no further action is required.

The increase in the number of potential Existing threats in recent years has substantially increased the workload for municipalities. Municipalities have also experienced an increase in the number of development reviews that are required to be screened to identify and manage or prohibit new threats in accordance with source protection plan policies. Risk Management Officials continue to prioritize risk management measures as appropriate, but progress is slow.

### **Extent to which source protection plan objectives have been achieved**

At its meeting on March 28, 2024, the Lake Erie Region Source Protection Committee (SPC) reviewed and discussed the Annual Report responses. The SPC was pleased to see that implementation of the source protection plan is progressing well but acknowledged that a large number of Risk Management Plans are still needed to address Existing threats in the Grand River Source Protection Area.

The SPC passed the following resolution:

THAT in the opinion of the Lake Erie Region Source Protection Committee, implementation of the Grand River Source Protection Plan is progressing well but remains short of target on achieving plan objectives;

AND THAT the Lake Erie Region Source Protection Committee direct staff to present the 2023 Annual Progress Report to the Source Protection Authority for submission.

The Source Protection Committee did not have any additional comments to include as part of the submission of the 2023 Grand River Annual Progress Report.

The Grand River Source Protection Authority is responsible for submitting the 2023 Grand River Annual Progress Report and Supplemental Form to the Director of Conservation and Source Protection, Ministry of the Environment, Conservation and Parks.

### **Financial Implications:**

Not applicable. The Source Protection Program is funded 100% by the Province and costs have been accounted for in the approved budget.

### **Other Department Considerations:**

Not applicable.

#### **Prepared by:**

Shari Dahmer  
Source Protection Program Manager

#### **Approved by:**

Samantha Lawson  
Chief Administrative Officer

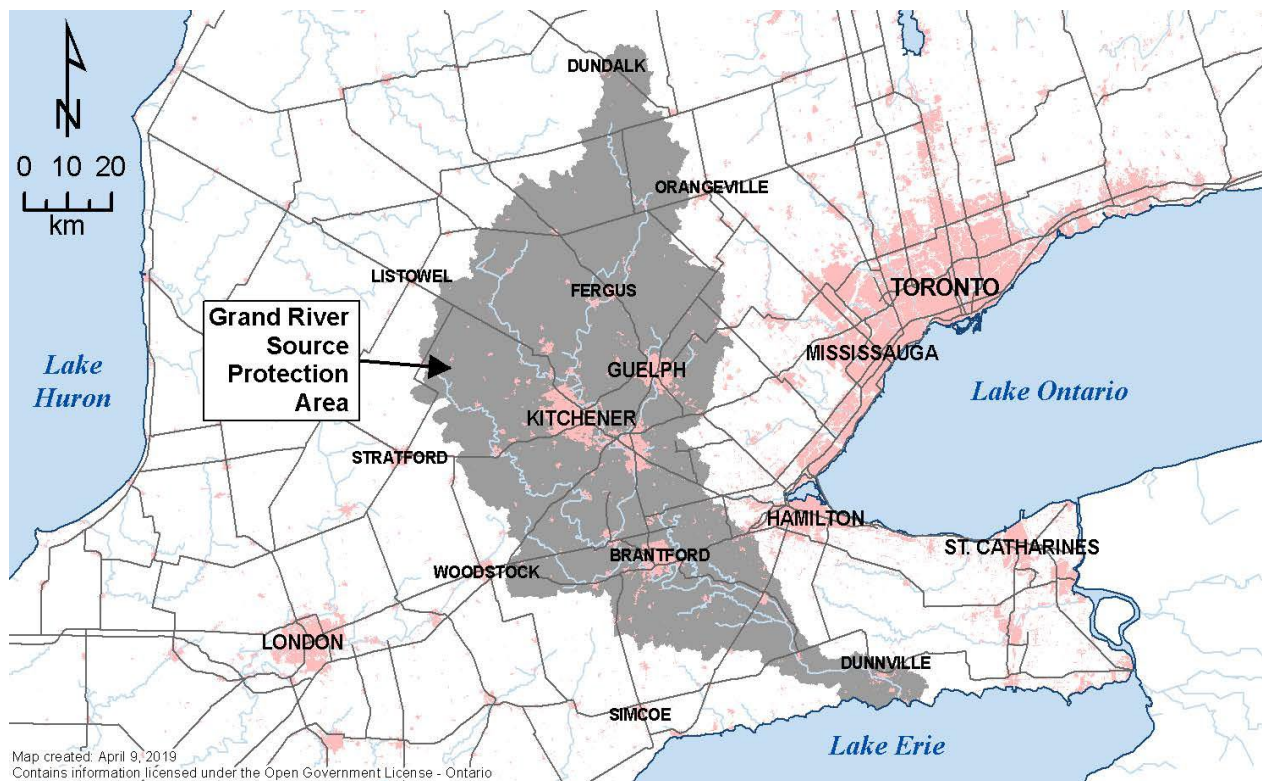
# Grand River Source Protection Area Annual Progress Report 2023

## I. Introduction

This annual progress report outlines the progress made in implementing our Source Protection Plan for the Grand River Source Protection Area, as required by the *Clean Water Act, 2006* and its regulations.

The Source Protection Plan is the culmination of extensive science-based assessment, research, consultation, and collaboration with local stakeholders and the provincial government. When policies in the plan are implemented it ensures that activities carried out near municipal wells and surface water intakes will not pose significant risk to the sources of our drinking water.

We acknowledge and recognize the efforts made by our local municipalities, stakeholders, and Source Protection Committee in the development and implementation of the Source Protection Plan.





## II. A message from your local Source Protection Committee

### **PS: Progressing Well/Short of Target – Implementation of the Source Protection Plan is progressing well but remains short of target on achieving plan objectives.**

When the source protection plan came into effect in 2016, 7,449 Existing significant drinking water threats were identified. “Existing” threats are, in general terms, activities that were occurring on the landscape before the Source Protection Plan was approved. Since then, amendments to the Grand River Source Protection Plan in 2019, 2020, 2021, and 2022 have resulted in an increase to the number of Existing significant drinking water threats.

A total of 14,770 potential Existing significant drinking water threats have been identified in the Grand River Source Protection Area as of December 31, 2023. Of these, 2,332 threats have been determined through field verification to no longer exist because the activity was not actually engaged in after all, or is no longer engaged in, at a particular location. A total of 5,455 existing threats have been managed and no longer pose a significant risk to municipal drinking water sources.

All municipalities in our Source Protection Area have processes in place to ensure planning decisions conform to our Source Protection Plan and are managing or prohibiting new threats as appropriate. Of legally-binding plan policies that address significant drinking water threats, 99% are implemented, in progress, or implemented because policy outcome(s) have been evaluated and it is determined that no further action(s) is required.

The increase in the number of potential Existing threats in recent years has substantially increased the workload for municipalities. Municipalities have also experienced an increase in the number of development reviews that are required to be screened to identify and manage or prohibit new threats in accordance with source protection plan policies. Risk Management Officials continue to prioritize risk management measures as appropriate, but progress is slow.



### III. Our Watershed

The Grand River Source Protection Area (watershed) is the largest in southern Ontario, covering an area of approximately 6,800 square kilometers. The Grand River begins as a small stream in the Dufferin Highlands and travels about 300 kilometers before emptying into Lake Erie at Port Maitland.

A key feature of the watershed is its major moraine systems, including the Orangeville, Waterloo, and Paris and Galt moraines. The moraines have extensive sand and gravel deposits and their overburden aquifers provide groundwater for municipal and private use. The extensive sand and gravel deposits associated with the Norfolk Sand Plain yield substantial water supplies to local users. Bedrock aquifers, including the Gasport, Guelph, and Salina formations, are also an important source of water.

There are 39 municipalities and two First Nations communities within the Grand River Source Protection Area, with a total watershed population of about one million people. About 80% of the population live in the cities of Kitchener, Waterloo, Cambridge, Guelph and Brantford. The Grand River is home to the Six Nations of the Grand River and the Mississaugas of the Credit First Nation.

The residents of the Grand River watershed receive drinking water supplies from both private and municipal supplies. There are currently 44 municipal systems and one First Nation system in the Grand River Source Protection Area, including 7 surface water intakes and 216 wells. The watershed is also an intensive agricultural area. Agriculture remains the largest land use in the watershed with 61% of the total watershed area.

### IV. At a Glance: Progress on Source Protection Plan Implementation

#### 1. Source Protection Plan Policies and Addressing Significant Risks

P: Progressing Well/On Target

The Grand River Source Protection Plan includes 864 policies, across 14 municipal chapters, to address prescribed threats, protect sources of drinking water and monitor the progress of policy implementation.

Of legally-binding plan policies that address significant drinking water threats, 99% are implemented, in progress, or implemented because policy outcome(s) have been evaluated and it is determined that no further action(s) is required.



## 2. Municipal Progress: Addressing Risks on the Ground

P: Progressing Well/On Target

Within the Grand River Source Protection Area, 12 upper- and single-tier municipalities and 21 lower-tier municipalities have vulnerable areas where significant drinking water threat policies apply.

Planning departments and building officials are screening applications for locations within vulnerable areas where threats to drinking water sources are possible and source protection plan policies may apply. Municipalities within our Source Protection Area are also required to review and update their Official Plan to ensure it conforms with the Grand River Source Protection Plan the next time they undertake an Official Plan review under the Planning Act.

As of December 31, 2023, all of the upper- and single-tier municipalities have completed or are in the process of completing their Official Plan amendments. Of the lower-tier municipalities, 5 have reported that their Official Plan conformity is complete, while the remaining are not able to complete their review until the County or Regional Official Plan has been approved. Planned completion timelines are likely to be delayed as a result of the legislative changes introduced in the *More Homes Built Faster Act, 2022*.

## 3. Septic Inspections

P: Progressing Well/On Target

The Ontario Building Code requires that small sewage systems be inspected every five years through a mandatory on-site sewage system inspection program. In the Grand River Source Protection Area 1669 on-site sewage systems require inspections every five years in accordance with the Ontario Building Code.

Of the 742 systems that were required to be inspected in 2023, 622 (84%) of the inspections were completed. Of the systems that were inspected, results found 42% required minor maintenance work (e.g. lid replacement, etc.), and 12% required major maintenance work (e.g. tank replacement, etc.), with the majority of maintenance required for systems in Wellington County.

Municipalities are working with remaining landowners to obtain additional information needed. In some cases inspections have already been scheduled for 2024. Where landowners refuse entry compliance orders are being sought.



## 4. Risk Management Plans

PS: Progressing Well/Short of Target

The Grand River Source Protection Plan contains policies that require the development of Risk Management Plans to manage drinking water threat activities. Screening processes are in place at municipalities to ensure applications for future development are reviewed for potential threat activities and applicability of source protection policies.

As of December 31, 2023, a total of 437 Risk Management Plans are in place in the Grand River Source Protection Area. An additional 34 Risk Management Plans were previously agreed to but were later cancelled because the activity was no longer occurring or was no longer subject to Risk Management Plan policies following a Source Protection Plan amendment.

In 2023, 93 Risk Management Plans were agreed to, managing 112 significant drinking water threat activities on 123 properties throughout the Source Protection Area. An additional 279 Risk Management Plans were reported as in progress at the end of 2023.

Throughout 2023, 789 inspections were carried out for an activity requiring a Risk Management Plan. Two inspections in Oxford County found activities taking place without a required Risk Management Plan. None of the inspections found non-compliance with the contents of a Risk Management Plan. An additional 146 inspections were conducted for activities that are prohibited under section 57 of the Clean Water Act. One inspection in the Region of Waterloo found activities taking place on the landscape even though they were prohibited.



## 5. Provincial Progress: Addressing Risks on the Ground

### P: Progressing Well/On Target

Ontario ministries are reviewing applications for new or amended and previously issued provincial approvals (e.g. Environmental Compliance Approvals issued under the Environmental Protection Act) where they have been identified as a tool in our plan to address activities that pose a significant risk to source water.

The Province has established Standard Operating Policies to ensure that approvals take into account the science generated through the Drinking Water Source Protection Program and policies in the Source Protection Plan. Provincial approvals are issued, denied, amended, or revoked to conform to plan policies. Where necessary, conditions are added to approvals to ensure that the activity does not pose a significant threat to sources of drinking water.

In 2023, Ontario ministries reported that 22 applications for prescribed instruments underwent a detailed review for source protection. In total, four prescribed instruments were issued where the significant drinking water threat is managed through conditions, including: 1 Permit to Take Water, 1 Environmental Compliance Approval for wastewater/sewage works, 1 Non-Agricultural Source Material (NASM) Plan, and 1 Nutrient Management Strategy. The remainder were determined not to be governing significant drinking water threat activity.

The Grand River Source Protection Plan set out a timeline of 3 years to complete the review and make any necessary changes to previously issued approvals. The Ministries have reported 100% completion of previously issued Provincial approvals in the Grand River Source Protection Area and have a review protocol in place to screen all new applicable approval applications. In 2023, the Ministries reported two newly identified Existing prescribed instruments that were subject to source protection policies in the Grand River Source Protection Area. One Nutrient Management Strategy was amended or replaced (no additional conditions were required). As of December 31, 2023, a decision was pending on one Environmental Compliance Approval for wastewater/sewage works.



## 6. Source Protection Awareness and Change in Behaviour

To raise awareness about the protection of local drinking water sources, municipalities across the Grand River Source Protection Area have installed a total of 331 drinking water protection signs on municipal roads and trails surrounding vulnerable areas. In addition, 14 signs have been installed on Provincial highways since the Source Protection Plan came into effect in 2016.

Municipalities, Conservation Authorities and other implementing bodies within the Grand River Source Protection Area work with landowners and business owners to help protect our sources of drinking water. Municipalities across the Lake Erie Source Protection Region have established education and outreach programs, which contribute to enhancing awareness of source water protection.

Examples of efforts to build awareness include:

- Training for municipal staff on how source protection relates to municipal planning, building, sewage, roads, and risk management operations.
- Development reviews and inspections continue to provide proponents with educational material about threats present, review process, source protection plan policies, and property specific mapping.
- Where necessary, stickers and metal tags were provided to proponents listing the Spills Action Centre number and that their location is located within a vulnerable area for municipal wells.
- Outreach to winter maintenance contractors
- Hosted Septic Social events in support of mandatory septic inspection program
- Education and outreach at Children's Water Festival, World Toilet Day, World Water Day, Fall Fairs, and other community and school events.
- Hosting Septic Social events in support of mandatory septic inspection program.
- Ongoing updates to municipal websites, brochures, fact sheets, etc.
- Social media and local newspaper outreach, including topics such as water conservation, road salt and fertilizer use.
- Promoting source water protection best practices through education and outreach to owners of non-municipal drinking water systems.



## 7. Source Protection Plan Policies: Summary of Delays

No progress has been made for one legally-binding policy that came into effect in 2022. The policy is directed at the Region of Waterloo and local municipalities, requiring them to review and amend their Official Plan and/or study requirements to ensure any consumptive water taking associated with a development application does not impact the sustainability of the Township of Centre Wellington municipal water supplies and ensure any study associated with a development application is required to be submitted as part of a complete application. Region staff have not yet completed a review of Official Plan policies for water taking in the WHPA-Q due to the uncertainty regarding the status of the Region Official Plan status beyond 2024.

## 8. Source Water Quality: Monitoring and Actions

As of December 31, 2023, there are 12 drinking water systems in the Grand River Source Protection Area with identified drinking water Issues (i.e. chloride, nitrate, sodium, and trichloroethylene).

Nitrate Issues have been identified in the County of Brant, City of Guelph, and Region of Waterloo with a decreasing concentration/trend reported for most wellfields. TCE Issues have been identified in the Township of Centre Wellington, City of Guelph, and Region of Waterloo with no change in concentration/trend reported for most wellfields. Chloride and/or Sodium Issues have been identified in the Township of Centre Wellington, Township of Guelph/Eramosa, and Region of Waterloo with an increasing concentration/trend reported for most wellfields. Issue Contributing Areas (WHPA-ICAs) have been delineated for all Grand River SPA Issues with the exceptions of the identified Chloride and Sodium Issues at the Rockwood Well Supply.

Municipalities continue to implement risk management strategies to address threat activities associated with an Issue/WHPA-ICA. All municipalities have monitoring and treatments systems in place to ensure that municipal drinking water meets the requirements of the *Safe Drinking Water Act, 2002*.

Municipalities have used the results of ongoing monitoring to determine where further investigation is needed and to conduct assessments to identify sources and/or explain concentration variability. Over time, appropriate monitoring will help determine if implementation of plan policies and other actions are improving raw water quality for these systems.



## 9. Science-based Assessment Reports: Work Plans

An order was received from the Ministry in June 2020 providing for a comprehensive review and update to the Grand River Assessment Report and Source Protection Plan (Plan) under Section 36 of the Clean Water Act.

Examples of tasks in the workplan include incorporation of:

- Growth and infrastructure changes (e.g. new drinking water supply wells)
- Technical Rule changes
- Transport pathway updates
- Results of environmental monitoring programs (e.g. review of monitoring data to evaluate existing or the potential for Issues identified at municipal drinking water wells)

The Plan update is currently underway and is expected to be submitted to the Ministry for approval in 2025.

## 10. More from the Watershed

To learn more about the Grand River Source Protection Area, visit the [Lake Erie Source Protection website](#).

# Source Water Protection Annual Report 2023 - Supplemental Form Grand River

Report Id	Completed	Question	
10	True	As applicable to your source protection region/area, indicate if all relevant implementing bodies submitted a status update/annual report to the source protection authority for the previous reporting year. If "No" is selected for any implementing body(ies), then please complete the Comments field below with details including the name of the specific implementing body along with an explanation, if available, for not submitting a status update/annual report as required by a monitoring policy. *NOTE: Where a listed implementing body(ies) is not applicable/relevant to your source protection region/area, then simply select "No" and explain that it is not an applicable implementing body in your source protection region/area in the Comments field text box.	
<b>Response</b>			<b>Answer</b>
Risk Management Official			Yes
Municipality			Yes
Conservation Authority			Yes
Local Health Unit			No
MECP - Waste Disposal Sites - Landfilling and Storage			Yes
MECP - Wastewater/Sewage Works			Yes
MECP - Pesticides			Yes
MECP - Hauled Sewage/Biosolids			Yes
MECP - Hauled Sewage/Biosolids Inspections			Yes
MECP - Permit to Take Water			Yes
MECP - Permit to Take Water Inspections			Yes
MECP - Municipal Residential Drinking Water Systems			Yes
MECP - Municipal Residential Drinking Water Systems Inspections			Yes
MECP - Source Protection			Yes
MECP - Waste Disposal Sites - Landfilling and Storage Inspections			Yes
MECP - Wastewater/Sewage Works Inspections			Yes
MECP - Conditions Sites			Yes
MECP - NMA - ASM and NASM Inspections			Yes
MECP - Environmental Monitoring			Yes
MECP - Fuel			Yes
MECP - Great Lakes			Yes

# Source Water Protection Annual Report

## 2023 - Supplemental Form

### Grand River

MECP - Spills Response	Yes
MECP - Wells	Yes
OMAFRA	Yes
MNRF	Yes
MTO	Yes
MMAH	Yes
MGCS-TSSA	No
MENDM	No
Provincial Board/Commission	No
Federal Departments/Agencies/Commissions/Crown Corporations	No
Private Entity/Company	No
Association/Organization	No

**Comment:** All the implementing bodies selected as "No" are not applicable.

# Source Water Protection Annual Report

## 2023 - Supplemental Form

### Grand River

Report Id	Completed	Question	Category
20	True	Did the Source Protection Authority indicate the status of all threat policies as contained in their source protection plan? Please provide details in the response field text box in the Policy Interface for policies with a "No Progress Made" and "No information available/no response received" implementation status especially for legally-binding policies that address significant drinking water threat activities and for any moderate/low threat policies that use prescribed instruments and Planning Act tools.	Implementation status of source protection plan policies
<b>Answer:</b>		Yes	

**Comment:** Comments have been provided for policies marked as "No progress made" or "No information available/no response received", for those implementing bodies that have submitted a status update / annual report to the Grand River Source Protection Authority.

Report Id	Completed	Question	Category
21	True	Did the source protection authority(ies) confirm the accuracy of the implementation status of all threat policies as contained in their source protection plan and located on the policy interface database for the current reporting year?	Monitoring Policy Implementation
<b>Answer:</b>		Yes	

**Comment:**

Report Id	Completed	Question	Category
22	True	Did all source protection authority(ies) confirm that if a policy is significant and legally binding and has not been implemented by a person or a body by the implementation date specified in the policy, that there are written comments that include a description of the failure and the reasons for the failure as per O.Reg 287/07 s.52(1) 1.?	Monitoring Policy Implementation
<b>Answer:</b>		Yes	

**Comment:**

# Source Water Protection Annual Report

## 2023 - Supplemental Form

### Grand River

Report Id	Completed	Question						
30	True	Number of risk management plans agreed to or established within the source protection area/region (to address existing and future threats) in this reporting period (i.e., annual total).						
		<table border="1"> <thead> <tr> <th>Current Year</th> <th>Cumulative Count</th> </tr> </thead> <tbody> <tr> <td style="text-align: center;">93</td> <td style="text-align: center;">471</td> </tr> <tr> <td style="text-align: center;"><b>Provincial Total</b></td> <td style="text-align: center;"><b>93</b></td> </tr> </tbody> </table>	Current Year	Cumulative Count	93	471	<b>Provincial Total</b>	<b>93</b>
Current Year	Cumulative Count							
93	471							
<b>Provincial Total</b>	<b>93</b>							
<b>Comment:</b>								

Report Id	Completed	Question						
31	True	Number of properties (i.e., parcels) with risk management plans agreed to or established in this reporting period.						
		<table border="1"> <thead> <tr> <th>Current Year</th> <th>Cumulative Count</th> </tr> </thead> <tbody> <tr> <td style="text-align: center;">123</td> <td style="text-align: center;">717</td> </tr> <tr> <td style="text-align: center;"><b>Provincial Total</b></td> <td style="text-align: center;"><b>123</b></td> </tr> </tbody> </table>	Current Year	Cumulative Count	123	717	<b>Provincial Total</b>	<b>123</b>
Current Year	Cumulative Count							
123	717							
<b>Provincial Total</b>	<b>123</b>							
<b>Comment:</b>								

Report Id	Completed	Question						
32	True	How many existing* significant drinking water threats have been managed through the established risk management plans in this reporting period (* meaning engaged in OR enumerated as existing significant threats)?						
		<table border="1"> <thead> <tr> <th>Current Year</th> <th>Cumulative Count</th> </tr> </thead> <tbody> <tr> <td style="text-align: center;">112</td> <td style="text-align: center;">502</td> </tr> <tr> <td style="text-align: center;"><b>Provincial Total</b></td> <td style="text-align: center;"><b>112</b></td> </tr> </tbody> </table>	Current Year	Cumulative Count	112	502	<b>Provincial Total</b>	<b>112</b>
Current Year	Cumulative Count							
112	502							
<b>Provincial Total</b>	<b>112</b>							
<b>Comment:</b>								



# Source Water Protection Annual Report

## 2023 - Supplemental Form

### Grand River

Report Id	Completed	Question						
40	True	How many section 59 notices were issued in this reporting period for activities to which neither a prohibition (section 57) nor a risk management plan (section 58) policy applied, as per ss. 59(2)(a) of the Clean Water Act?						
<table border="1"> <thead> <tr> <th>Current Year</th> <th>Cumulative Count</th> </tr> </thead> <tbody> <tr> <td>857</td> <td>6209</td> </tr> <tr> <td><b>Provincial Total</b></td> <td><b>857</b></td> </tr> </tbody> </table>			Current Year	Cumulative Count	857	6209	<b>Provincial Total</b>	<b>857</b>
Current Year	Cumulative Count							
857	6209							
<b>Provincial Total</b>	<b>857</b>							
<b>Comment:</b>								

Report Id	Completed	Question						
41	True	How many section 59 notices were issued in this reporting period for activities to which a risk management plan (section 58) policy applied, as per ss. 59(2)(b) of the Clean Water Act?						
<table border="1"> <thead> <tr> <th>Current Year</th> <th>Cumulative Count</th> </tr> </thead> <tbody> <tr> <td>95</td> <td>372</td> </tr> <tr> <td><b>Provincial Total</b></td> <td><b>95</b></td> </tr> </tbody> </table>			Current Year	Cumulative Count	95	372	<b>Provincial Total</b>	<b>95</b>
Current Year	Cumulative Count							
95	372							
<b>Provincial Total</b>	<b>95</b>							
<b>Comment:</b>								

Report Id	Completed	Question						
61	True	State the total number of inspections (including any follow-up site visits) that were carried out for activities (existing or future) that are prohibited under section 57 of the Clean Water Act in this reporting period. If no inspections were conducted in the previous calendar year, please explain.						
<table border="1"> <thead> <tr> <th>Current Year</th> <th>Cumulative Count</th> </tr> </thead> <tbody> <tr> <td>146</td> <td>650</td> </tr> <tr> <td><b>Provincial Total</b></td> <td><b>146</b></td> </tr> </tbody> </table>			Current Year	Cumulative Count	146	650	<b>Provincial Total</b>	<b>146</b>
Current Year	Cumulative Count							
146	650							
<b>Provincial Total</b>	<b>146</b>							
<b>Comment:</b>								

# Source Water Protection Annual Report

## 2023 - Supplemental Form

### Grand River

Report Id	Completed	Question				
62	True	Among the inspections conducted for section 57, how many showed that activities were taking place on the landscape even though they were prohibited (i.e., in contravention) under section 57 of the Clean Water Act in this reporting period?				
		<table border="1"> <thead> <tr> <th>Current Year</th> <th>Cumulative Count</th> </tr> </thead> <tbody> <tr> <td style="text-align: center;">1</td> <td style="text-align: center;">5</td> </tr> </tbody> </table>	Current Year	Cumulative Count	1	5
Current Year	Cumulative Count					
1	5					
<b>Provincial Total</b>		<table border="1"> <tbody> <tr> <td style="text-align: center;">1</td> <td style="text-align: center;">5</td> </tr> </tbody> </table>	1	5		
1	5					
<b>Comment:</b> Lake Erie SPR does not count cases where the RMO has not previously been in contact with the appropriate individual and therefore the person may be unaware that the activity occurring on the property is prohibited.						

Report Id	Completed	Question				
63	True	How many new properties were identified with s.57 prohibited activities during the reporting year (do not include properties established outside of this reporting year)?				
		<table border="1"> <thead> <tr> <th>Current Year</th> <th>Cumulative Count</th> </tr> </thead> <tbody> <tr> <td style="text-align: center;">1</td> <td style="text-align: center;">1</td> </tr> </tbody> </table>	Current Year	Cumulative Count	1	1
Current Year	Cumulative Count					
1	1					
<b>Provincial Total</b>		<table border="1"> <tbody> <tr> <td style="text-align: center;">1</td> <td style="text-align: center;">1</td> </tr> </tbody> </table>	1	1		
1	1					
<b>Comment:</b>						

Report Id	Completed	Question				
70	True	How many existing significant drinking water threats have been prohibited as a result of section 57 prohibitions in this reporting period?				
		<table border="1"> <thead> <tr> <th>Current Year</th> <th>Cumulative Count</th> </tr> </thead> <tbody> <tr> <td style="text-align: center;">1</td> <td style="text-align: center;">24</td> </tr> </tbody> </table>	Current Year	Cumulative Count	1	24
Current Year	Cumulative Count					
1	24					
<b>Provincial Total</b>		<table border="1"> <tbody> <tr> <td style="text-align: center;">1</td> <td style="text-align: center;">24</td> </tr> </tbody> </table>	1	24		
1	24					
<b>Comment:</b>						

# Source Water Protection Annual Report

## 2023 - Supplemental Form

### Grand River

Report Id	Completed	Question						
80	True	State the total number of inspections (including any follow-up site visits) that were carried out for activities that require a risk management plan under section 58 of the Clean Water Act in this reporting period. If no inspections were conducted in the previous calendar year, please explain.						
		<table border="1"> <thead> <tr> <th>Current Year</th> <th>Cumulative Count</th> </tr> </thead> <tbody> <tr> <td style="text-align: center;">789</td> <td style="text-align: center;">1729</td> </tr> <tr> <td style="text-align: center;"><b>Provincial Total</b></td> <td style="text-align: center;"><b>789</b></td> </tr> </tbody> </table>	Current Year	Cumulative Count	789	1729	<b>Provincial Total</b>	<b>789</b>
Current Year	Cumulative Count							
789	1729							
<b>Provincial Total</b>	<b>789</b>							
<b>Comment:</b>								

Report Id	Completed	Question						
81	True	Among the inspections conducted for section 58, how many were in contravention with section 58 of the Clean Water Act in this reporting period (i.e., person engaging in a drinking water threat activity without a risk management plan as required by the source protection plan)?						
		<table border="1"> <thead> <tr> <th>Current Year</th> <th>Cumulative Count</th> </tr> </thead> <tbody> <tr> <td style="text-align: center;">2</td> <td style="text-align: center;">12</td> </tr> <tr> <td style="text-align: center;"><b>Provincial Total</b></td> <td style="text-align: center;"><b>2</b></td> </tr> </tbody> </table>	Current Year	Cumulative Count	2	12	<b>Provincial Total</b>	<b>2</b>
Current Year	Cumulative Count							
2	12							
<b>Provincial Total</b>	<b>2</b>							
<b>Comment:</b> Lake Erie SPR does not count cases where the RMO has not previously been in contact with the appropriate individual and therefore the person may be unaware that a Risk Management Plan is required.								

# Source Water Protection Annual Report

## 2023 - Supplemental Form

### Grand River

Report Id	Completed	Question	Current Year	Cumulative Count
82	True	Among the inspections for section 58, how many were in non-compliance with the specific contents of the risk management plan in this reporting period? (NOTE: Please only include those inspections that showed non-compliance with measures/conditions to manage the actual threat activity.)	0	3
<b>Provincial Total</b>			0	3
<b>Comment:</b>				

Report Id	Completed	Question	Current Year	Cumulative Count
83	True	State the total number of notices issued where there were cases of contraventions and/or non-compliance found with section 57 in this reporting period.	0	0
<b>Provincial Total</b>			0	0
<b>Comment:</b> LESPR has interpreted this question to mean the number of times the RMO caused a thing to be done under section 64 of the Act, during the reporting period. There are no notices referenced in section 57 or section 58 of the Act that relate to contraventions or non-compliance. The total number of orders issued for contraventions and/or non-compliance with section 57 and section 58 can be found under Q#85 and Q#86, respectively.				

# Source Water Protection Annual Report

## 2023 - Supplemental Form

### Grand River

Report Id	Completed	Question	Current Year	Cumulative Count
84	True	State the total number of notices issued where there were cases of contraventions and/or non-compliance found with section 58 in this reporting period.	0	0
<b>Provincial Total</b>			0	0
<b>Comment:</b> LESPR has interpreted this question to mean the number of times the RMO caused a thing to be done under section 64 of the Act, during the reporting period. There are no notices referenced in section 57 or section 58 of the Act that relate to contraventions or non-compliance. The total number of orders issued for contraventions and/or non-compliance with section 57 and section 58 can be found under Q#85 and Q#86, respectively.				

Report Id	Completed	Question	Current Year	Cumulative Count
85	True	State the total number of orders issued for contraventions and/or non-compliance found with section 57 in this reporting period.	0	0
<b>Provincial Total</b>			0	0
<b>Comment:</b>				

Report Id	Completed	Question	Current Year	Cumulative Count
86	True	State the total number of orders issued for contraventions and/or non-compliance found with section 58 in this reporting period.	0	0
<b>Provincial Total</b>			0	0
<b>Comment:</b>				

# Source Water Protection Annual Report

## 2023 - Supplemental Form

### Grand River

**Report Id    Completed    Question**

220            True            List the municipality(ies) (including upper-, lower-, and single-tier) within the source protection region/area that are required to complete Official Plan and Zoning exercises to conform to the latest source protection plan, and indicate the status of those exercises for each applicable municipality. "Latest source protection plan" means the first approved plan or any subsequent approved plan update. \*NOTE: Applies to every municipality affected by land use planning or Part IV type policies. Where the official plan and/or zoning by-law status for any particular municipality needs to be changed/updated, then please do so by deleting the entry for that particular municipality by clicking on the red "-" (minus) sign and then re-select the municipality name from the drop down list of municipalities followed by selecting the updated status of the conformity exercise for the official plan and zoning by-law from the drop down list for that particular municipality. After doing so, please be sure to add the municipality as your response by clicking on the green plus sign.

<b>Municipality</b>	<b>Official Plan</b>	<b>Zoning By Law</b>
City of Hamilton	Completed	Completed
Corporation of Haldimand County	Completed	Completed
Township of Melancthon	Completed	Completed
Township of Wilmot	Completed	Completed
City of Guelph	Completed	Completed, but Under appeal
City of Brantford	Completed	In Progress/Updates Underway
Township of Centre Wellington	Completed	In Progress/Updates Underway
Township of East Garafraxa	Completed	In Progress/Updates Underway
Township of Southgate	Completed	In Progress/Updates Underway
Dufferin, County of	Completed	Not Applicable
Grey, County of	Completed	Not Applicable
Oxford, County of	Completed	Not Applicable
County of Brant	Completed	Not Started
Town of Erin	In Progress/Updates Underway	In Progress/Updates Underway
Township of Amaranth	In Progress/Updates Underway	In Progress/Updates Underway
Township of East Luther Grand Valley	In Progress/Updates Underway	In Progress/Updates Underway
Township of Woolwich	In Progress/Updates Underway	In Progress/Updates Underway
Halton, Regional Municipality of	In Progress/Updates Underway	Not Applicable
Perth, County of	In Progress/Updates Underway	Not Applicable
Waterloo, Regional Municipality of	In Progress/Updates Underway	Not Applicable

# Source Water Protection Annual Report 2023 - Supplemental Form Grand River

Wellington, County of	In Progress/Updates Underway	Not Applicable
Town of Milton	In Progress/Updates Underway	Not Started
Township of North Dumfries	In Progress/Updates Underway	Not Started
Township of Blandford-Blenheim	Not Applicable	Completed
Township of Puslinch	Not Applicable	Completed
Township of Wellington North	Not Applicable	Completed
Township of Guelph/Eramosa	Not Applicable	In Progress/Updates Underway
Township of Mapleton	Not Applicable	In Progress/Updates Underway
Township of Perth East	Not Applicable	Not Started
City of Cambridge	Not Started	In Progress/Updates Underway
City of Kitchener	Not Started	In Progress/Updates Underway
City of Waterloo	Not Started	Not Started
Township of Wellesley	Not Started	Not Started

**Comment:** Completion timelines for Official Plan amendments have been delayed for many municipalities within the LESPR as a result of the legislative changes introduced in Bill 23. As of December 31, 2023, all of the upper- and single-tier municipalities have submitted their Official Plan amendment to the Ministry of Municipal Affairs and Housing (MMAH) for approval. These have been provided a status of "completed" or "in progress".  
The Town of Grand Valley, Region of Waterloo, and Wellington County Official Plan's have previously been updated and are currently undergoing a review to bring them into conformity with amendments to the source protection plan that came into effect in 2022. Of the lower-tier municipalities, 5 have reported that their Official Plan conformity is complete, while the remaining are not able to complete their review until the County or Regional Official Plan has been approved. Planned completion timelines are likely to be delayed as a result of the legislative changes introduced in the More Homes Built Faster Act, 2022.

Report Id	Completed	Question	Current Year	Cumulative Count
240	True	State the number of source water protection signs installed on provincial highways in the source protection region/area in this reporting period.	0	14
<b>Provincial Total</b>			0	14
<b>Comment:</b> No signs were installed on Provincial highways in 2023. There is one outstanding sign location in an active construction zone within the Grand River SPA that will be installed once construction is complete (anticipated 2024).				

# Source Water Protection Annual Report

## 2023 - Supplemental Form

### Grand River

Report Id	Completed	Question						
241	True	State the number of source water protection signs installed on municipal roads in the source protection region/area in this reporting period.						
<table border="1"> <thead> <tr> <th>Current Year</th> <th>Cumulative Count</th> </tr> </thead> <tbody> <tr> <td>5</td> <td>318</td> </tr> <tr> <td><b>Provincial Total</b></td> <td><b>5</b></td> </tr> </tbody> </table>			Current Year	Cumulative Count	5	318	<b>Provincial Total</b>	<b>5</b>
Current Year	Cumulative Count							
5	318							
<b>Provincial Total</b>	<b>5</b>							
<b>Comment:</b> Installation of replacement signs is not captured in the numbers reported for question 241. In 2023 the City of Brantford installed 5 new signs and replaced 5 signs.								

Report Id	Completed	Question						
242	True	State the number of source water protection signs installed at other locations (if applicable) in the source protection region/area in this reporting period.						
<table border="1"> <thead> <tr> <th>Current Year</th> <th>Cumulative Count</th> </tr> </thead> <tbody> <tr> <td>0</td> <td>13</td> </tr> <tr> <td><b>Provincial Total</b></td> <td><b>0</b></td> </tr> </tbody> </table>			Current Year	Cumulative Count	0	13	<b>Provincial Total</b>	<b>0</b>
Current Year	Cumulative Count							
0	13							
<b>Provincial Total</b>	<b>0</b>							
<b>Comment:</b>								

Report Id	Completed	Question	Category
260	True	Current total overall number of on-site sewage systems that are assessed as significant drinking water threat activities and that are required to be inspected every five years in accordance with the Ontario Building Code.	Sewage System Inspections
<b>Answer:</b>	1696		
<b>Comment:</b>			



# Source Water Protection Annual Report

## 2023 - Supplemental Form

### Grand River

Report Id	Completed	Question	Category
261	True	Of those requiring inspections, how many inspections of on-site sewage systems were due to be carried out in this reporting period? If not applicable or no inspections of on-site sewage systems were due to be carried out in this reporting period because they were already inspected earlier within the inspection cycle or will be inspected in a future year within the cycle, then please enter "0" and state either explanation in the comment field.	Sewage System Inspections
<b>Answer:</b>	742		

**Comment:**

Report Id	Completed	Question	Current Year	Cumulative Count
262	True	How many on-site sewage system inspections were completed in this reporting period?	622	2446
<b>Provincial Total</b>			622	2446

**Comment:**

Report Id	Completed	Question	Current Year	Cumulative Count
263	True	How many of the inspected on-site sewage systems required minor maintenance work in this reporting period?	265	1193
<b>Provincial Total</b>			265	1193

**Comment:**

# Source Water Protection Annual Report

## 2023 - Supplemental Form

### Grand River

Report Id	Completed	Question	Current Year	Cumulative Count
264	True	How many of the inspected on-site sewage systems required major maintenance work (e.g., tank replacement, etc.) in this reporting period?	78	192
<b>Provincial Total</b>			78	192
<b>Comment:</b>				

Report Id	Completed	Question	Category
265	True	How many of the inspected on-site sewage systems required no maintenance work?	Sewage System Inspections
<b>Answer:</b>	279		
<b>Comment:</b>			

# Source Water Protection Annual Report

## 2023 - Supplemental Form

### Grand River

Report Id	Completed	Question	
266	True	For those on-site sewage systems that were not inspected in this reporting period but should have been inspected, and are now out of compliance, please indicate why they were not all inspected from among the reasons below. [Note: For municipalities that have not yet initiated the mandatory on-site sewage system inspection program, please see the next reportable to provide your response if this is the case].	
		<b>Response</b>	<b>Answer</b>
		landowner refused entry, compliance order being sought	Yes
		inspections delayed/postponed due to COVID-19 restrictions	No
		vulnerable area changed and on-site sewage system(s) no longer a threat activity	No
		other. Please specify in the comment box below.	Yes
<b>Comment:</b> Municipalities are working with remaining landowners to obtain additional information needed. In some cases inspections have already been scheduled for 2024. Where landowners refuse entry compliance orders will be sought (many orders are already in progress).			

# Source Water Protection Annual Report

## 2023 - Supplemental Form

### Grand River

**Report Id    Completed    Question**

270      True      Complete the information below regarding environmental monitoring of drinking water issues identified in accordance with the Technical Rules within your source protection region/area. Begin by selecting the drinking water system, the specific well or intake, the drinking water issue, the delineation status, and the observation of the concentration. [OPTIONAL]: In the comments field, describe any actions or behavioural changes that might be contributing to reported changes in the concentration of the issue or parameter. Where the drinking water issue, well or intake, delineation status, or observation of any previously listed drinking water system needs to be changed/updated, then please do so by deleting the entry for that particular drinking water system by clicking on the red minus sign on the right side of the entry and then re-select the drinking water system from the dropdown list of drinking water systems followed by selecting the associated well or intake, the drinking water issue, its delineation status, and the observation from the dropdown list for that particular drinking water system. After doing so, please be sure to add the drinking water system as your response by clicking on the green plus sign on the right side of the entry. If this reportable is not applicable to your source protection region/area, please indicate as such by choosing "No system with issues," "Not Known/Available," "No issue," "Not applicable," and "No observation," respectively, under the drop down menu options under each of the categories of this reportable. Do not leave blank.

DWIS Number	DWIS Name	Issue	ICA Delinated	Observation
220000166	Cambridge Well Supply	Sodium	Yes	Increasing Concentration / Trend
220000166	Cambridge Well Supply	Sodium	Yes	Increasing Concentration / Trend
220000157	Waterloo Well Supply	Sodium	Yes	Increasing Concentration / Trend
220000157	Waterloo Well Supply	Sodium	Yes	Increasing Concentration / Trend
220003092	Kitchener Well Supply	Sodium	Yes	Increasing Concentration / Trend
220000157	Waterloo Well Supply	Sodium	Yes	Increasing Concentration / Trend
220000157	Waterloo Well Supply	Chloride	Yes	Increasing Concentration / Trend
220003092	Kitchener Well Supply	Chloride	Yes	Increasing Concentration / Trend
220003092	Kitchener Well Supply	Chloride	Yes	Increasing Concentration / Trend
220003092	Kitchener Well Supply	Chloride	Yes	Increasing Concentration / Trend
220003092	Kitchener Well Supply	Chloride	Yes	Increasing Concentration / Trend
220003092	Kitchener Well Supply	Chloride	Yes	Increasing Concentration / Trend
220003092	Kitchener Well Supply	Chloride	Yes	Increasing Concentration / Trend
220003092	Kitchener Well Supply	Chloride	Yes	Increasing Concentration / Trend
220000166	Cambridge Well Supply	Chloride	Yes	Increasing Concentration / Trend
220000166	Cambridge Well Supply	Chloride	Yes	Increasing Concentration / Trend
220003092	Kitchener Well Supply	Chloride	Yes	Increasing Concentration / Trend

# Source Water Protection Annual Report

## 2023 - Supplemental Form

### Grand River

220000166	Cambridge Well Supply	Chloride	Yes	Increasing Concentration / Trend
220000166	Cambridge Well Supply	Chloride	Yes	Increasing Concentration / Trend
220003092	Kitchener Well Supply	Chloride	Yes	Increasing Concentration / Trend
220000166	Cambridge Well Supply	Chloride	Yes	Increasing Concentration / Trend
220000166	Cambridge Well Supply	Chloride	Yes	Increasing Concentration / Trend
220000157	Waterloo Well Supply	Chloride	Yes	Increasing Concentration / Trend
220000157	Waterloo Well Supply	Chloride	Yes	Increasing Concentration / Trend
220000166	Cambridge Well Supply	Chloride	Yes	Increasing Concentration / Trend
220000166	Cambridge Well Supply	Chloride	Yes	Increasing Concentration / Trend
220000166	Cambridge Well Supply	Sodium	Yes	Increasing Concentration / Trend
220000166	Cambridge Well Supply	Sodium	Yes	Increasing Concentration / Trend
220003092	Kitchener Well Supply	Sodium	Yes	Increasing Concentration / Trend
220003092	Kitchener Well Supply	Sodium	Yes	Increasing Concentration / Trend
220003092	Kitchener Well Supply	Sodium	Yes	Increasing Concentration / Trend
260002538	Branchton Well Supply	Chloride	Yes	Increasing Concentration / Trend
220000166	Cambridge Well Supply	Sodium	Yes	Increasing Concentration / Trend
220000166	Cambridge Well Supply	Sodium	Yes	Increasing Concentration / Trend
220003092	Kitchener Well Supply	Sodium	Yes	Increasing Concentration / Trend
220003092	Kitchener Well Supply	Sodium	Yes	Increasing Concentration / Trend
220003092	Kitchener Well Supply	Sodium	Yes	Increasing Concentration / Trend
220003092	Kitchener Well Supply	Sodium	Yes	Increasing Concentration / Trend
260002668	Mannheim Village Well Supply	Nitrate	Yes	Decreasing Concentration / Trend
220002752	Paris Well Supply	Nitrate	Yes	Decreasing Concentration / Trend
260002707	Shingletown Well Supply	Nitrate	Yes	Decreasing Concentration / Trend
260002707	Shingletown Well Supply	Nitrate	Yes	Decreasing Concentration / Trend
260002707	Shingletown Well Supply	Nitrate	Yes	Decreasing Concentration / Trend
260002668	Mannheim Village Well Supply	Nitrate	Yes	Decreasing Concentration / Trend
260002668	Mannheim Village Well Supply	Nitrate	Yes	Decreasing Concentration / Trend
220000166	Cambridge Well Supply	Sodium	Yes	No Change in Concentration / Trend

# Source Water Protection Annual Report

## 2023 - Supplemental Form

### Grand River

220005599	Rockwood Well Supply	Sodium	No	No Change in Concentration / Trend
220005599	Rockwood Well Supply	Sodium	No	No Change in Concentration / Trend
220003092	Kitchener Well Supply	Sodium	Yes	No Change in Concentration / Trend
220005599	Rockwood Well Supply	Chloride	No	No Change in Concentration / Trend
220000166	Cambridge Well Supply	Chloride	Yes	No Change in Concentration / Trend
220000166	Cambridge Well Supply	Trichloroethylene (TCE)	Yes	No Change in Concentration / Trend
220003092	Kitchener Well Supply	Trichloroethylene (TCE)	Yes	No Change in Concentration / Trend
220000166	Cambridge Well Supply	Trichloroethylene (TCE)	Yes	No Change in Concentration / Trend
220000166	Cambridge Well Supply	Trichloroethylene (TCE)	Yes	No Change in Concentration / Trend
220000166	Cambridge Well Supply	Trichloroethylene (TCE)	Yes	No Change in Concentration / Trend
220000166	Cambridge Well Supply	Trichloroethylene (TCE)	Yes	No Change in Concentration / Trend
220000157	Waterloo Well Supply	Trichloroethylene (TCE)	Yes	No Change in Concentration / Trend
220000157	Waterloo Well Supply	Trichloroethylene (TCE)	Yes	No Change in Concentration / Trend
220000157	Waterloo Well Supply	Trichloroethylene (TCE)	Yes	No Change in Concentration / Trend
220000086	Township of Centre Wellington Well Supply	Trichloroethylene (TCE)	Yes	No Change in Concentration / Trend
220000166	Cambridge Well Supply	Trichloroethylene (TCE)	Yes	No Change in Concentration / Trend
220000166	Cambridge Well Supply	Chloride	Yes	No Change in Concentration / Trend
220000166	Cambridge Well Supply	Chloride	Yes	No Change in Concentration / Trend
220000086	Township of Centre Wellington Well Supply	Chloride	Yes	No Change in Concentration / Trend

# Source Water Protection Annual Report 2023 - Supplemental Form Grand River

220000086	Township of Centre Wellington Well Supply	Chloride	Yes	No Change in Concentration / Trend
220005599	Rockwood Well Supply	Chloride	No	No Change in Concentration / Trend
220002734	St. George Well Supply	Nitrate	Yes	No Change in Concentration / Trend
220000095	Guelph Well Supply	Nitrate	Yes	Not Enough Data
220000095	Guelph Well Supply	Trichloroethylene (TCE)	Yes	Not Enough Data
220000095	Guelph Well Supply	Trichloroethylene (TCE)	Yes	Not Enough Data
220000095	Guelph Well Supply	Trichloroethylene (TCE)	Yes	Not Enough Data

**Comment:** #1 - The Kitchener Well Supply well listed as "not known/available" is well K4C but was not provided as an option in the drop-down;

#2 - In previous years the Dundalk Well Supply was reported as having a Nitrate Issue. However, Sodium has not formally been identified as a drinking water quality Issue under Technical Rule 114 in the current approved Grand River Assessment Report and therefore should not be reported as such. Concentrations will continue to be monitored for any potential increasing trend but will not be included in the response for Q#270;

#3 - The identified Nitrate Issue for the Paris Well Supply includes wells from both the Gilbert (P210, P211, P212, P213, P214, P215) and Telfer (P31, P32) Wellfields. No prominent increasing or decreasing trends has been noted for nitrate concentrations at the Paris (Gilbert) wellfield. A decreasing trend has been noted for nitrate concentrations at the Paris (Telfer) wellfield. These trends reflect an average across each wellfield; 4) Nitrate remains an identified Issue for the St. George Well Supply. No change in concentration/trend has been reported which reflects an average across the wellfield (Wells 1, 2, 3).

Report Id	Completed	Question	Current Year	Cumulative Count
280	True	How many notices about transport pathways (meaning a condition of land resulting from human activity (e.g., pits and quarries, improperly abandoned wells, geothermal system, etc.) that increases the vulnerability of a raw water supply of a drinking water system) did the source protection authority receive from municipalities in this reporting period (as per O. Reg. 287/07, ss. 27(3))?	0	12
<b>Provincial Total</b>			0	12
<b>Comment:</b> No transport pathway notices were received by the SPA in the current reporting year				

# Source Water Protection Annual Report

## 2023 - Supplemental Form

### Grand River

Report Id	Completed	Question	
281	True	Where transport pathway notices were received, indicate the action(s) taken by the source protection region/area in response to receiving these notices:	
		<b>Response</b>	<b>Answer</b>
		Provided information to municipalities about changes in vulnerability	No
		Provided notice to Source Protection Committee for information	No
		Situation continues to be monitored	No
<b>Comment:</b> No transport pathway notices were received by the SPA in the current reporting year			



# Source Water Protection Annual Report

## 2023 - Supplemental Form

### Grand River

Report Id	Completed	Question	
300	True	[OPTIONAL]: If and where there are successful examples for each of the following initiatives in the source protection region/area (including from local municipalities, residents and businesses) that occurred in this reporting period that the authority wishes to highlight, then please indicate in the Comments field below. In your comments, please include details for each of the selected topics. Please limit the descriptions provided (e.g., one example for each topic or more could be included when the source protection authority feels they are exceptional/quite successful).	
		<b>Response</b>	<b>Answer</b>
		Education and Outreach (in description include details, if available, on type and percentage of target population reached, outcome(s) achieved, etc.)	No
		Incentives (in description include details, if available, on outcome(s) achieved, how widely available was the incentive, etc.)	No
		Stewardship Programs	No
		Best Management Practices	No
		Pilot Programs	No
		Research	No
		Specify Action (e.g., road salt management, municipal by-laws, legislative or regulatory amendments, mapping, review of fuel codes, new airport facility design standards to manage runoff of chemicals from de-icing of aircraft, instrumentation, etc.)	No
		Climate Change (e.g., data collection)	No
		Spill prevention/spill contingency/emergency response plan updates	No
		Transport pathways	No
		Water quantity	No
		Great Lakes	No
		Other policies (i.e., strategic action, etc.)	No
		<b>Comment:</b> Grand River Source Protection Authority will not be providing a response to question 300.	

# Source Water Protection Annual Report

## 2023 - Supplemental Form

### Grand River

**Report Id    Completed    Question**

305            True

Complete the table below with the count data for each significant drinking water threat activity/local threat activity/condition being engaged in (i.e., enumerated as 'existing' significant threats) at the time of source protection plan approval or approval of amendments that include new / changing protection zones. Please use the best available information/desktop exercises, reports from Risk Management Officials, and other implementing bodies to provide the counts below. For convenience, the count data from the previous reporting year have been copied over, but please be sure to review, edit, and confirm the counts for accuracy in the table below. [CWA Section 46(1)(a)]

The running tally consists of the formula: A+B-C-D where:

A = Number of significant drinking water threats estimated when the source protection plan was first approved

B = Number of additional significant drinking water threats counted after the first source protection plan approval (not part of the original estimate)

C = Number of significant drinking water threats included in A that were determined through field verification to no longer exist because: (i) the threat was not actually engaged in at a particular location after all OR (ii) it was no longer engaged in (e.g., land may still have an agricultural operation but owner is no longer applying pesticides for their own reasons)

D = Number of significant drinking water threats addressed because a policy is implemented. (It is understood that multiple policies/policy tools may address a single threat on the landscape. If any one policy is implemented and directed at that single threat it is considered addressed.)

In the comments box below summarize any remaining significant threats needing to be addressed for each source protection authority and what actions will be taken to eliminate those threats. If all threats have been addressed for each source protection authority(ies) write "All known significant threats have been addressed" in the comments box. Note that this summary response will be posted under the objective summary section 2 of the report.

ThreatId	Threat	A	B	C	D
1	The establishment, operation or maintenance of a waste disposal site within the meaning of Part V of the Environmental Protection Act.	185	4	79	9
2	The establishment, operation or maintenance of a system that collects, stores, transmits, treats or disposes of sewage.	214 2	118	188	169 7
3	The application of agricultural source material to land.	388	1	92	138
4	The storage of agricultural source material.	334	0	104	123

# Source Water Protection Annual Report 2023 - Supplemental Form Grand River

5	The management of agricultural source material.	2	0	2	0
6	The application of non-agricultural source material to land.	35	0	6	22
7	The handling and storage of non-agricultural source material.	55	2	25	21
8	The application of commercial fertilizer to land.	244	4	35	93
9	The handling and storage of commercial fertilizer.	143	0	50	14
10	The application of pesticide to land.	466	9	90	59
11	The handling and storage of pesticide.	119	1	63	0
12	The application of road salt.	351	525	468	249
13	The handling and storage of road salt.	5 947	101	148	41
14	The storage of snow.	491	17	41	31
15	The handling and storage of fuel.	546	28	318	35
16	The handling and storage of a dense non-aqueous phase liquid.	951	118	420	78
17	The handling and storage of an organic solvent.	272	6	158	4
18	The management of runoff that contains chemicals used in the de-icing of aircraft.	0	0	0	0
19	Water taking from an aquifer without returning the water to the same aquifer or surface water body	275	0	0	275
20	Reducing recharge of an aquifer	6 32	0	3	6 29
21	The use of land as livestock grazing or pasturing land, an outdoor confinement area or a farm-animal yard. O. Reg. 385/08, s. 3.	175	5	42	51
22	The establishment and operation of a liquid hydrocarbon pipeline	2	0	0	0
1000	Water conditioning salts from water softeners	0	0	0	0

# Source Water Protection Annual Report 2023 - Supplemental Form

## Grand River

1001	Transportation of specified substances along corridors	0	0	0	0
1002	Spill of Tritium from Nuclear Generating Station	0	0	0	0
1003	Handling storage of fuel	0	0	0	0
1004	Transportation, storage and handling of diesel/gasoline	0	0	0	0
1005	Transportation of Agricultural and Non-Agricultural Source Materials	0	0	0	0
1006	International Shipping Channel within IPZ2	0	0	0	0
1007	Transportation of hazardous substances along transportation corridors	0	0	0	0
1008	Transportation or Storage and Handling of Fuel in an Event Based Area	0	0	0	0
1009	Waterfowl	0	0	0	0
1010	Local condition	32	0	0	5
	<b>545</b>	<b>124</b>			
	<b>5</b>	<b>39</b>			
			<b>Totals:</b>	<b>13832</b>	<b>939</b>
				<b>2332</b>	<b>5455</b>

Comment:

MECP Calc (C+D)/(A+B): 53 %

# Source Water Protection Annual Report 2023 - Supplemental Form Grand River

Report Id	Completed	Question	Category
310	True	Please provide comments below to explain the overall progress made in addressing existing significant threat activities and include the percentage of overall progress made within the comments provided. The percentage of overall progress made in addressing local threats and conditions that are taking place on the landscape is determined by taking the total number in column D (i.e., significant drinking water threat addressed because policy is implemented) from the table above (reportable 305) adding it to C (i.e., significant threats determined through field verification to no longer be threats) and dividing it by the number that is derived by adding the total numbers in columns A and B. In other words, overall progress made = $(C+D)/(A + B)$ .	Addressing existing enumerated threats
<b>Answer:</b>		The overall progress made in addressing these threats is 53%.	
<b>Comment:</b>		The increase in the number of potential existing threats in recent years has substantially increased the workload for municipalities. Municipalities have also experienced an increase in the number of development reviews that are required to be screened to identify and manage or prohibit new threats in accordance with source protection plan policies. Risk Management Officials continue to prioritize risk management measures as appropriate, but progress is slow.	

Report Id	Completed	Question	Category
320	True	If applicable, where the 2013/2017 technical rules were used for the assessment report update/amendment, provide a summary of steps taken to further assess or implement the plans of work described in technical rule 30.1: Water Budget Tier 3 not included in your original assessment report(s).	Assessment report information gaps
<b>Answer:</b>		Not Applicable	
<b>Comment:</b>		See response to question #323	

# Source Water Protection Annual Report 2023 - Supplemental Form Grand River

Report Id	Completed	Question	Category
321	True	If applicable, where the 2013/2017 technical rules were used for the assessment report update/amendment, provide a summary of steps taken to further assess or implement the plans of work described in technical rule 50.1: GUDI for WHPA-E or F not included in your original assessment report(s).	Assessment report information gaps

**Answer:** Not Applicable

**Comment:**

Report Id	Completed	Question	Category
322	True	If applicable, where the 2013/2017 technical rules were used for the assessment report update/amendment, provide a summary of steps taken to further assess or implement the plans of work described in technical rule 116: Issue Contributing Area not included in your original assessment report(s).	Assessment report information gaps

**Answer:** Not Applicable

**Comment:** Rule 116 has been removed from the Technical Rules as part of the 2021 update.

Report Id	Completed	Question	Category
323	True	[OPTIONAL] If applicable where the 2021 technical rules were used for the assessment report update/amendment, provide a summary of steps taken to further assess or implement the plans of work described in technical rule 30.1: Water Budget Tier 3 not included in your original assessment report(s).	Assessment report information gaps

**Answer:** An order was received from the Ministry in June 2020 providing for a comprehensive review and update to the Grand River Assessment Report and Source Protection Plan (Plan) under Section 36 of the Clean Water Act. The workplan includes tasks related to technical rule 30.1: Tier 3 Water Budget; specifically, updating the Guelph-Guelph/Eramosa (GGET), Township of Centre Wellington and Region of Waterloo Tier 3 models.

**Comment:**

# Source Water Protection Annual Report

## 2023 - Supplemental Form

### Grand River

Report Id	Completed	Question	Category
324	True	[OPTIONAL] Where the 2021 technical rules were used for the assessment report update/amendment, provide a summary of steps taken to further assess or implement the plans of work described in technical rule 50.1: GUDI for WHPA-E or F not included in your original assessment report(s).	Assessment report information gaps
<b>Answer:</b> Grand River Source Protection Authority will not be providing a response to question 324.			
<b>Comment:</b>			

Report Id	Completed	Question	Category
330	True	Does the source protection authority have any other item(s) on which it wishes to report? If so, please explain.	Other reporting items
<b>Answer:</b> There are no additional items to report.			
<b>Comment:</b>			

# Source Water Protection Annual Report

## 2023 - Supplemental Form

### Grand River

Report Id	Completed	Question	
350	True	In the opinion of the Source Protection Committee, to what extent have the objectives of the source protection plan been achieved in this reporting period?	
<b>Response</b>			<b>Answer</b>
Progressing Well - The majority of the policies from the approved original or an amended source protection plan have been implemented and/or are progressing well			Yes
Satisfactory - Some of the policies from the approved original or an amended source protection plan have been implemented and/or are progressing well			No
Limited Progress made - A few of the policies from the approved original or an amended source protection plan have been implemented and/or are progressing well			No
<b>Comment:</b> In its review of the 2023 Annual Progress Report for the Grand River Source Protection Area, the SPC once again chose a modified assessment of progress in achieving the Plan's objectives.			
PS: Progressing Well/Short of Target – Implementation of the Source Protection Plan is progressing well but remains short of target on achieving plan objectives.			



# Source Water Protection Annual Report 2023 - Supplemental Form Grand River

Report Id	Completed	Question	Category
351	True	Please provide comments to explain how the Source Protection Committee arrived at its opinion. Include a summary of any discussions that might have been had amongst the Source Protection Committee members, especially where no consensus was reached.	Achievement of source protection plan objectives
<b>Answer:</b>		<p>Lake Erie Source Protection Region (LESPR) staff conducted a detailed analysis of the information and data received from implementing bodies and developed the draft Annual Progress Report and supplemental form responses for the Source Protection Committee (SPC) to review. The SPC was provided with a copy of the documents as part of the agenda package for the March 28, 2024 SPC meeting. During the meeting details of the report were presented and SPC members discussed implementation progress for the Source Protection Area and agreed on their response for Part II "A message from your local Source Protection Committee".</p> <p>Part of the discussion at the SPC meeting included the fact that amendments to the plan in 2019, 2020, 2021, and 2022 have resulted in additional Existing threats that have increased the work load for municipalities. When evaluating progress on Risk Management Plans (RMPs), the SPC has struggled to determine what the target should be since LESPR does not have timeline for getting RMPs in place. Given the large number of properties with Existing SDWTs not yet managed by RMPs the SPC once again chose a modified assessment of progress in achieving the Plan's objectives.</p>	
<b>Comment:</b>			